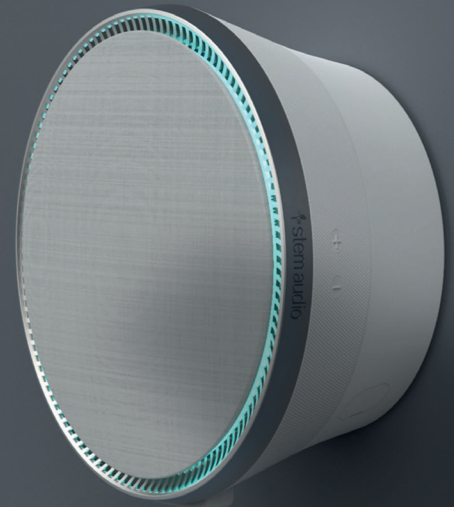




# STEM ECOSYSTEM



## STEM SPEAKER NETWORKED LOUDSPEAKER

### OVERVIEW

Stem Speaker Networked Loudspeaker delivers exceptional sound experiences in any meeting room with its powerful drivers and built-in technology, while a choice of table, wall, or ceiling mounting options provide ultimate flexibility to highlight the tech or keep it low-profile in the room.

### FEATURES

- Compatible with other Stem Ecosystem devices to expand sound in any meeting space.
- Can be used beyond video conferencing to also play program audio, background music, to listen to songs at full volume.
- LED light ring indicates device status.
- Controls on the device include Volume Up and Down. Speaker volume can also be adjusted using Stem Control Touch Controller.
- Power over Ethernet (PoE+).
- Three mounting options: Ceiling mount, wall mount, or standing.
- Kensington lock equipped.

### SPECIFICATIONS (subject to change)

#### GENERAL

Connector Type	RJ45
Power Requirements	Power over Ethernet Plus (PoE+)
Power Consumption	22 Watts (PoE+)
Control Application	Stem Ecosystem Platform
Weight	5.6 lbs (2.5 kg)
Product Dimensions	9 x 4 in (22.9 x 10.2 cm) Diameter x Depth
Operating Temperature Range	-6.7°C (20°F) to 40°C (104°F)
Storage Temperature Range	-29°C (-20°F) to 74°C (165°F)

#### AUDIO

Frequency Response	60Hz to 20kHz
Maximum Output Level (at 1 meter)	102 dB SPL

### ACCESSORIES (included in the box)

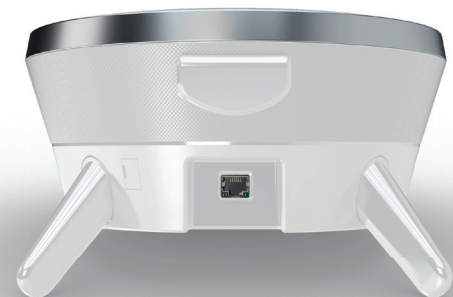
CAT 6 Ethernet Cable: 15 ft. (4.6 m)
Aluminum Ring for Ceiling Mounting
Wall Mounting Kit (Screws and Drywall Anchors)
Legs and Rubber Screw Head Covers for Tabletop Setup



STEM SPEAKER  
Ceiling Mount



STEM SPEAKER  
Table Stand



STEM SPEAKER  
Connectivity