

TSW-760/1060-MSMK

Multisurface Mount Kit for TSS-7, TSS-10, TSW-760, and TSW-1060 Series, Angled

- Enables mounting a TSS-7, TSS-10, TSW-760, TSW-760-NC, TSW-1060, or TSW-1060-NC touch screen to virtually any flat, smooth surface
- Ideal for mounting at the entrance to a meeting space for room scheduling applications
- Provides a 20° upward tilt angle
- Secure, screwless installation using peel-and-stick adhesive pad
- Perfect for mounting to a glass wall or partition
- Includes an assortment of raceway to conceal wiring
- Also allows attachment to a variety of electrical boxes
- Available in smooth black or white finish

The TSW-760/1060-MSMK multisurface mount kit provides a versatile surface mounting solution for a TSS-7, TSS-10, TSW-760, TSW-760-NC, TSW-1060, or TSW-1060-NC touch screen. Using the multisurface mount kit, the touch screen can be mounted directly to glass, granite, marble, wood paneling, plaster, smooth masonry, or virtually any other flat surface. The TSW-760/1060-MSMK is ideal for mounting at the entrance to a meeting space for room scheduling applications. When installed, the touch screen is angled upwards at a 20° tilt.

The TSW-760/1060-MSMK attaches securely to a flat, smooth surface without screws using the included peel and stick adhesive pad. For a finished appearance when mounted to a transparent glass wall, a cosmetic label is provided, which simply affixes to the opposing side of the glass behind the unit. Alternately, the unit can be mounted over an electrical box using the screws provided. Cables may be run through the back of the unit or through one of the raceway knockouts located on the bottom or either side of the unit.



The kit comes complete with self-adhering plastic raceway for use on smooth surfaces to conceal wires running to the touch screen from the floor, ceiling, or an adjacent wall, pillar, or mullion. The raceway is paintable and is composed of three 3 foot (0.91 m) sections plus an assortment of elbows and couplings.

Rev 03/21/19

TSW-760/1060-MSMK

Multisurface Mount Kit for TSS-7, TSS-10, TSW-760, and TSW-1060 Series, Angled

Specifications

Construction

Housing: Plastic, smooth black or white finish

Surface Mounting: Peel-and-stick adhesive mounting to glass or other flat, smooth surface

Back Box Mounting: Attaches to a 2-gang or 3-gang US electrical box, horizontally-oriented 1-gang US electrical box, 2-gang European electrical box, or 2-gang UK electrical box

Raceway: Peel-and-stick adhesive mount plastic raceway, white (paintable), 0.77 inch W x 0.46 inch D (19.6 mm W x 11.7 mm D) profile; includes (3) 3 ft (0.91 m) straight sections, (2) straight couplers, (2) 90° flat elbows, (1) inside elbow, and (1) outside elbow

Dimensions

Without touch screen:

Height: 4.62 in. (118 mm)

Width: 6.08 in. (155 mm)

Depth: 2.20 in. (56 mm), 2.26 in. (58 mm) with adhesive pad

With TSS-7/TSW-760/TSW-760-NC installed:

Height: 4.70 in. (120 mm)

Width: 7.61 in. (194 mm)

Depth: 2.74 in. (70 mm), 2.80 in. (72 mm) with adhesive pad

With TSS-10/TSW-1060/TSW-1060-NC installed:

Height: 6.29 in. (160 mm)

Width: 10.23 in. (260 mm)

Depth: 3.05 in. (78 mm), 3.11 in. (79 mm) with adhesive pad

Weight

4.2 oz (119 g) without touch screen or raceway

Models & Accessories

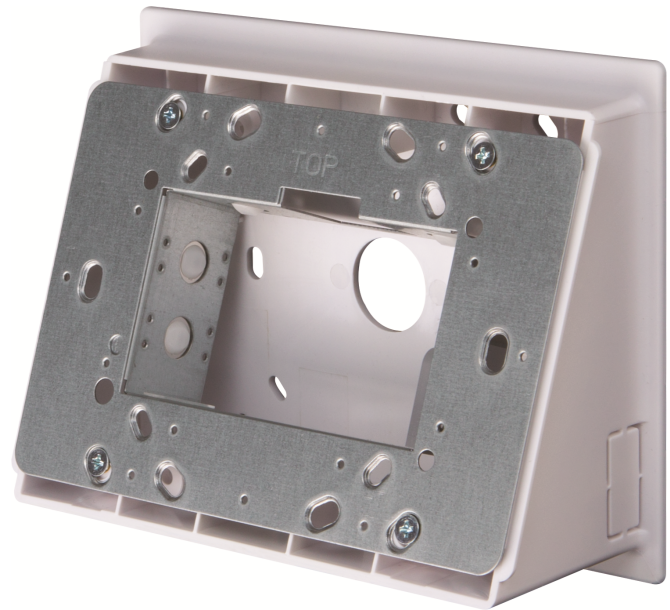
Available Models

TSW-760/1060-MSMK-B-S

Multisurface Mount Kit for TSS-7, TSS-10, TSW-760, & TSW-1060 Series, Angled, Black Smooth

TSW-760/1060-MSMK-W-S

Multisurface Mount Kit for TSS-7, TSS-10, TSW-760, & TSW-1060 Series, Angled, White Smooth



This product may be purchased from select authorized Crestron dealers and distributors. To find a dealer or distributor, please contact the Crestron sales representative for your area. A list of sales representatives is available online at <https://www.crestron.com/How-To-Buy/Find-a-Representative> or by calling 855-263-8754.

The specific patents that cover Crestron products are listed online at www.crestron.com/legal/patents.

Certain Crestron products contain open source software. For specific information, please visit www.crestron.com/opensource.

Crestron and the Crestron logo are either trademarks or registered trademarks of Crestron Electronics, Inc. in the United States and/or other countries. Other trademarks, registered trademarks, and trade names may be used in this document to refer to either the entities claiming the marks and names or their products. Crestron disclaims any proprietary interest in the marks and names of others. Crestron is not responsible for errors in typography or photography.

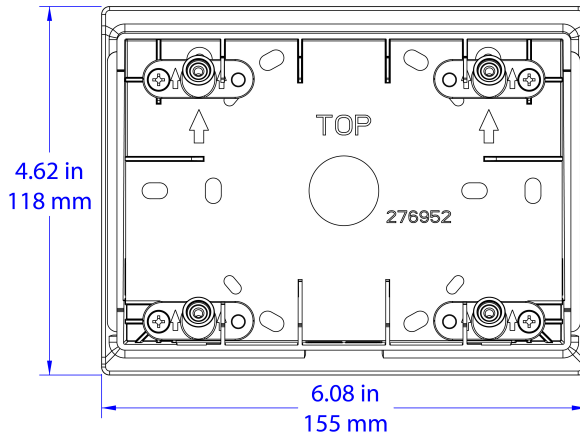
Specifications are subject to change without notice.

©2019 Crestron Electronics, Inc.

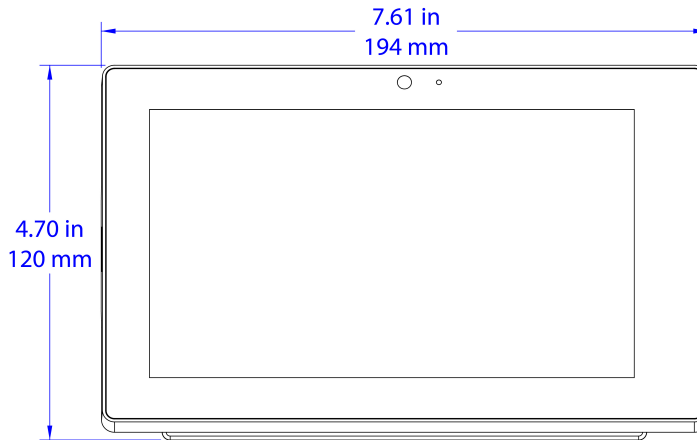
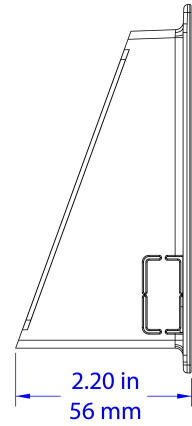
Rev 03/21/19

TSW-760/1060-MSMK

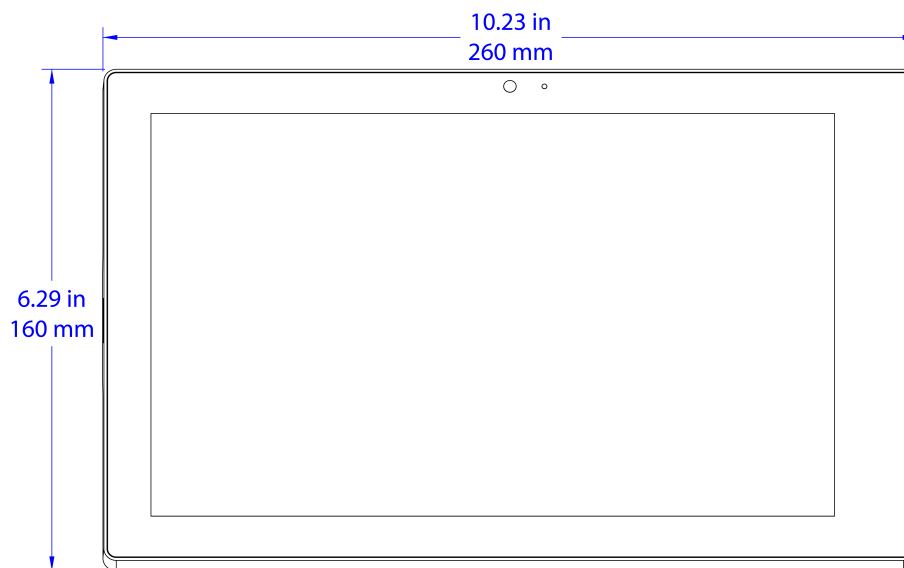
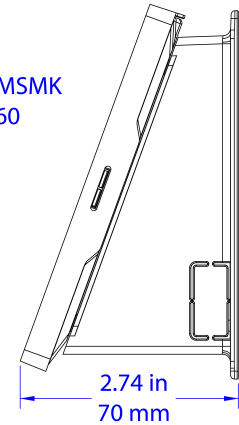
Multisurface Mount Kit for TSS-7, TSS-10, TSW-760, and TSW-1060 Series, Angled



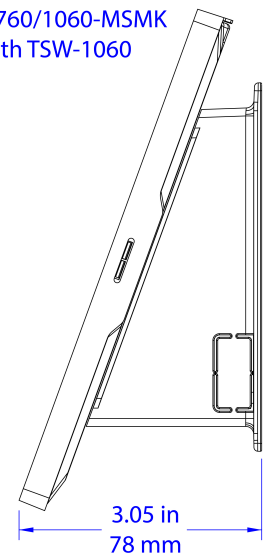
TSW-760/1060-MSMK



TSW-760/1060-MSMK
with TSW-760



TSW-760/1060-MSMK
with TSW-1060



Rev 03/21/19