

# Zavus XP Displays

0.7 | 0.9 | 1.2



## Xtreme Pixel

### Flip Chip COB MicroLED

- 1000 Nits Sustained Luminance
- 3,840Hz Scan Rate
- DCI-P3/Rec.2020
- Thin profile ideal for surface mount
- Touch Capable

## See the World in 21:9 Panorama

Jupiter continues its 21:9 ultra-wide display offerings by expanding the product portfolio beyond sizes offered by our Pana series of LCDs. Zavus XP is intended to offer pre-packaged 21:9 (customizable) touch enabled solutions that start at 164" and continue up to 281" diagonal.

Ideal for enterprise and industrial companies leaning into visualization technology to be the focal point and center piece. CIOs are telling us 21:9 is making the biggest impressions enabling them to stand out, land new clients and attract better talent. That's a win-win.

## Zavus XP Highlights

### Flip Chip Common Cathode COB

Provides an encapsulated pixel area with a smooth black resin coating that is suitable for (optional) touch. Flip chip delivers 30% improved energy efficiency than standard common cathode COB.

### Captivating Image Quality

The combination of DCI-P3 deep colors, up to 16-bit color depth, perfect black levels and up to 1,000 nits sustained luminance provides the ideal canvas for any content to be displayed under any indoor lighting conditions.

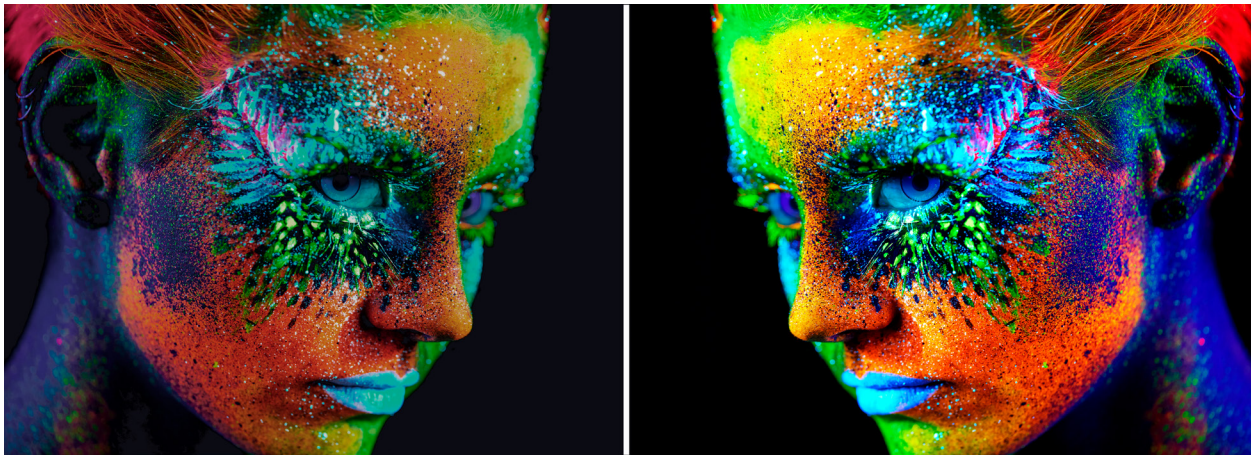
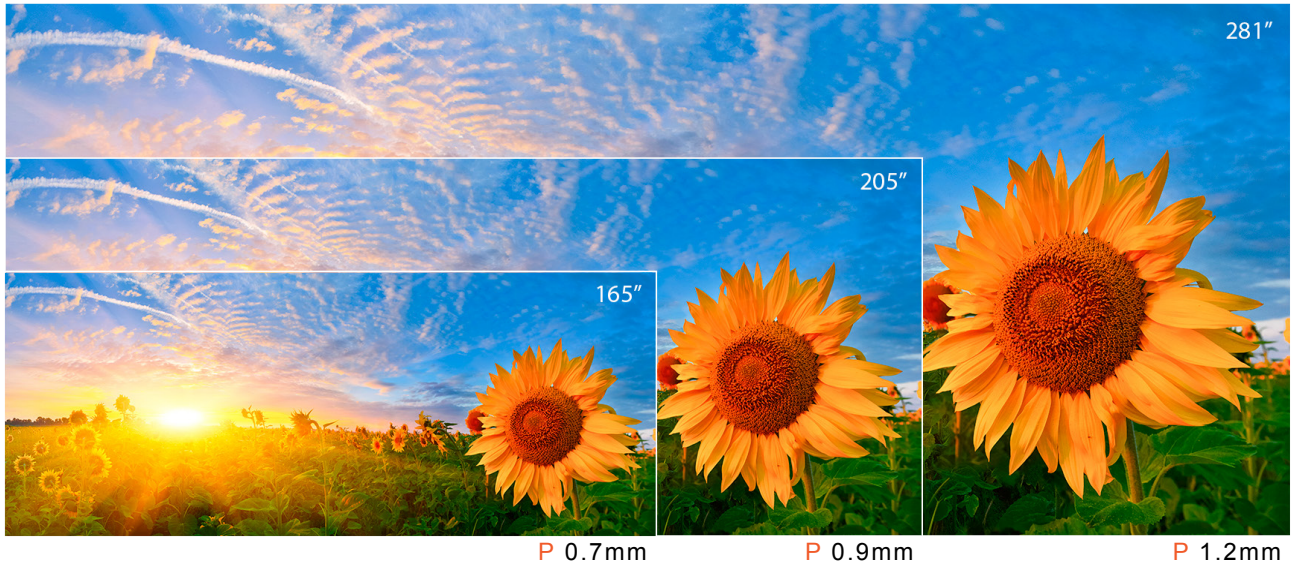
### Built for the Modern Office

Zavus XP represents the pinnacle for Jupiter Display Engineering as it can handle all typical deployments, such as: MTR/eMTR collaboration spaces, digital signage, training facilities, NOCs/SOCs, and executive offices.

**MEGAPIXEL**  
VISUAL REALITY

Ultimate quality control with embedded MegapixelVR processing.

**5K 21:9  
AVAILABLE  
WALL SIZES**



**A MARVEL OF  
ENGINEERING**

**Up to 1,000,000:1 contrast ratio means no details stay hidden, and 16-bit per color internal processing delivers unmatched colors.**

**UNRIVALED  
IMAGE DEPTH  
AND CONTRAST**



**Superior grayscale and 3,840Hz camera friendly scan rates provide an immersive experience for virtual productions.**

	Zavus XP 0.7	Zavus XP 0.9	Zavus XP 1.2
<b>CABINET AND MODULE</b>			
Cabinet Dimensions W x H x D	480 x 270 x 28 mm	600 x 337.5 x 28 mm	600 x 337.5 x 28 mm
Module Dimensions W x H	120 x 135 mm	150 x 168.75 mm	150 x 168.75 mm
Module Resolution	160 x 180 pixels	160 x 180 pixels	120 x 135 pixels
Color Gamut	sRGB/Rec.709 100%, DCI-P3 96%, Rec.2020 80%	sRGB/Rec.709 100%, DCI-P3 96%, Rec.2020 80%	sRGB/Rec.709 100%, DCI-P3 96%, Rec.2020 80%
Contrast	1,000,000:1 typical	1,000,000:1 typical	1,000,000:1 typical
Peak Luminance	300 – 1,000 cd/m <sup>2</sup> adjustable	300 – 1,000 cd/m <sup>2</sup> adjustable	300 – 1,000 cd/m <sup>2</sup> adjustable
Cabinet Resolution	640 x 360 pixels	640 x 360 pixels	480 x 270 pixels
Modules per cabinet W x H	4 x 2	4 x 2	4 x 2
Response Time	< 1 microsec	< 1 microsec	< 1 microsec
Viewing Angle	170° H/V	170° H/V	170° H/V
Color Bit Depth	Up to 16 bits (281 Trillion colors)	Up to 16 bits (281 Trillion colors)	Up to 16 bits (281 Trillion colors)
Scan Rate	3,840 Hz	3,840 Hz	3,840 Hz
Color Uniformity	+/- 0.003 CIE <sub>xy</sub> , < 1 JND (Just Noticeable Difference)	+/- 0.003 CIE <sub>xy</sub> , < 1 JND (Just Noticeable Difference)	+/- 0.003 CIE <sub>xy</sub> , < 1 JND (Just Noticeable Difference)
<b>INTERFACES</b>			
Interface Ports (Megapixel VR Helios)	1x DisplayPort 1.4 HBR3 (5120 x 2880 HDR @ 60 Hz), 1x HDMI 2.0b, (4096 x 2160 HDR @ 60 Hz), 4x SDI (SD & HD-SDI), 1x BNC sync (Black Burst SD and Tri-Level HD)	1x DisplayPort 1.4 HBR3 (5120 x 2880 HDR @ 60 Hz), 1x HDMI 2.0b, (4096 x 2160 HDR @ 60 Hz), 4x SDI (SD & HD-SDI), 1x BNC sync (Black Burst SD and Tri-Level HD)	1x DisplayPort 1.4 HBR3 (5120 x 2880 HDR @ 60 Hz), 1x HDMI 2.0b, (4096 x 2160 HDR @ 60 Hz), 4x SDI (SD & HD-SDI), 1x BNC sync (Black Burst SD and Tri-Level HD)
<b>TOUCH (OPTIONAL)</b>			
Touch Technology	IR-Based Touch Overlay	IR-Based Touch Overlay	IR-Based Touch Overlay
Multi-Touch	32-Point Simultaneous	32-Point Simultaneous	32-Point Simultaneous
OS Support	Windows / Mac OS / Linux (Ubuntu, Fedora)	Windows / Mac OS / Linux (Ubuntu, Fedora)	Windows / Mac OS / Linux (Ubuntu, Fedora)
<b>SURFACE FINISH</b>			
Operating Temperature	Black Matte (Anti-Glare with black resin between pixels and smooth to the touch)	Black Matte (Anti-Glare with black resin between pixels and smooth to the touch)	Black Matte (Anti-Glare with black resin between pixels and smooth to the touch)
<b>RELIABILITY</b>			
Lifetime	100,000 hours typical	100,000 hours typical	100,000 hours typical
Operation	24 x 7 continuous operation supported	24 x 7 continuous operation supported	24 x 7 continuous operation supported
<b>INSTALLATION</b>			
Mount Options	Fixed / Ceiling / Wall	Fixed / Ceiling / Wall	Fixed / Ceiling / Wall
<b>POWER/HEAT DISSIPATION</b>			
Power Input	AC 100 – 240 VAC, 50/60 Hz auto switching	AC 100 – 240 VAC, 50/60 Hz auto switching	AC 100 – 240 VAC, 50/60 Hz auto switching
Consumption	400 W / m <sup>2</sup> Max, 200 W / m <sup>2</sup> Average	380 W / m <sup>2</sup> Max, 160 W / m <sup>2</sup> Average	350 W / m <sup>2</sup> Max, 145 W / m <sup>2</sup> Average
Heat Dissipation	1,364 BTU/hr per square meter Max, 682 BTU/hr per square meter Average	1,296 BTU/hr per square meter Max, 546 BTU/hr per square meter Average	1,192 BTU/hr per square meter Max, 495 BTU/hr per square meter Average
<b>ENVIRONMENTAL CONDITIONS</b>			
Operating Condition Temperature	-20 - 60°C	-20 - 60°C	-20 - 60°C
Humidity	10 - 90% RH, Non-condensing	10 - 90% RH, Non-condensing	10 - 90% RH, Non-condensing
Environmental Protection	Rear: IP65; Front: IP54	Rear: IP65; Front: IP54	Rear: IP65; Front: IP54
<b>TYPICAL WALL SIZE</b>			
Cabinet, Area Weight	3.16 kg, 24.4 kg / m <sup>2</sup>	4.5 kg, 22 kg / m <sup>2</sup>	4.5 kg, 22 kg / m <sup>2</sup>
<b>CERTIFICATIONS</b>			
Regulatory and Safety Certifications	UL, CE, FCC, ROHS	UL, CE, FCC, ROHS	UL, CE, FCC, ROHS

jupiter.com

© 2023 Jupiter. Jupiter is a registered trademark of Jupiter Systems, Inc. Product specifications and designs are subject to change without notice. All brand and products names and logos are registered trademarks of Jupiter Systems, Inc.