

COMMERCIAL AUDIOVISUAL DESIGN & INTEGRATION



Welcome to Creation Networks!

We work with businesses, architects, builders, designers and consultants from initial concept, to design, development, sales, final installation and service. We build long-term relationships by delivering the latest audio visual and conferencing technology with the highest quality design, installation, and service that exceeds our clients expectations.

We understand minimizing downtime is crucial to our clients. To prevent you from worrying about your equipment and concentrate on your business, we offer service and preventative maintenance contracts that adapt to your needs.

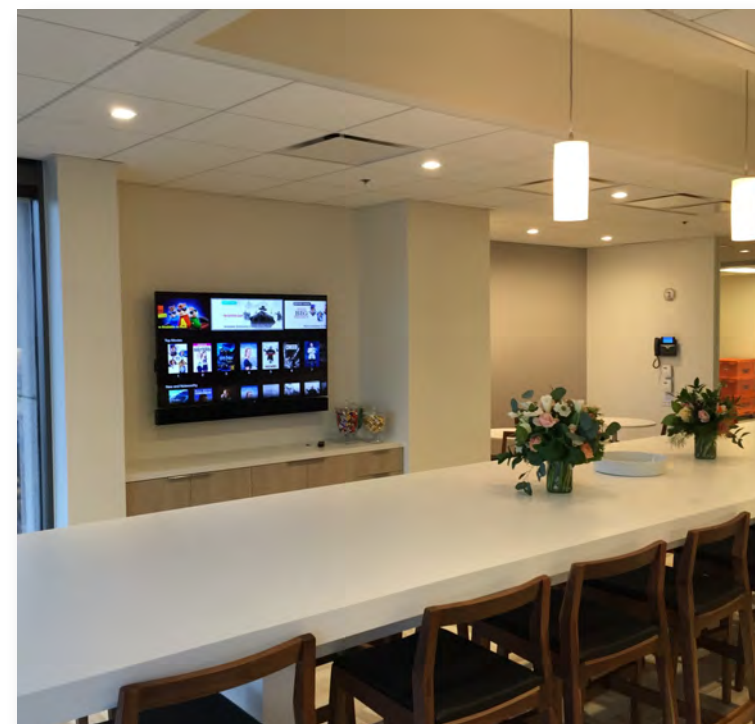
Expect The Best!

The Company

1001 Shary Circle, Suite 1, Concord, CA 94518 | office: 925.446.4332 | www.creationnetworks.net



Commercial Project Gallery



Commercial Project Gallery

Control Systems

Whether utilizing an in-wall or desktop touch panel, you will have one-touch control over your entire AV system. Select your video source or adjust the volume of the meeting. One device puts the room at your fingertips. Every application has a best solution, and we help you find yours.



Video Distribution

Effectively and elegantly distributing video throughout your business requires a working knowledge of all the latest technologies. We specialize in designing, installing and maintaining your technology infrastructure, eliminating all the clutter of CDs, DVDs and Blu-rays by connecting every room/office to your system. We provide elegant control for simple operation, streamlined design for efficient use of components, and reduced costs from elimination of infrequently used cable/satellite boxes. Your content is stored digitally and streamed from online content providers.



Outdoor Meeting Space

Businesses are now turning outdoor spaces into meeting areas in more ways than one. Outdoor flat-screen TVs, screens with projection systems, speakers installed around patios and all hands spaces have transformed ordinary outdoor spaces into exciting outdoor multi-use areas. You can enjoy the weather, watch a game on TV, or listen to your favorite music. The electronic equipment already installed inside can provide the audio and video for the outside.



Audio Distribution

A/D systems send audio to any room in your office via a central processor. Control of your audio needs is simple and intuitive by means of a touch panel, keypad, handheld RF remote, iPad or similar wi-fi device. Whether the speakers are placed in the walls, ceiling, bookshelves, patio, gym or pool, each system is uniquely designed to blend in with its surroundings in order to minimize the visual impact.



Our Services

Digital Signage

Digital signage is an effective, user-friendly and proven means of delivering dynamic messages to the right targets at chosen locations. Bring life to your promotional displays with eye-catching and interactive displays. Ideal for hospitality, casinos, retail, transportation hubs, entertainment, and many other venues, users have the ability to manage their own digital signage network across any number of locations, resulting in more captivated and engaged customers.



CCTV

Surveillance systems provide views of your property from strategically placed cameras and can be watched on TV, in-wall touch panels or even from your computer or mobile device via the internet. Keep an eye on cleaning staff or the warehouse. Protect your employees with the installation of a CCTV system and digital video recorder. Cameras can augment the security system by triggering audible alarms, scene recording, or email generation when they sense motion in the area.



Video Walls

Video Walls combine crisp, clean LCD & LED panels and state of the art Video Processors into a powerful turnkey solution that allows you to present your information in vivid, sharp HD video images. Create virtually seamless video walls by using LCD Display Panels. Video walls utilize precision machined components which results in perfect alignment of our LCD panels. We offer several sizes of LCD panels so we can design a solution to match your specific requirements.



AV Networks

A network is a business' central nervous system. We'll help lay a solid and reliable foundation that's ready for today's technology, and tomorrow's. Our experience has shown a hard-wired solution almost always works best. So why not wireless? For most entertainment and communications applications, wireless should only be used if it is not feasible or cost effective to get a wire to a location. Either way, we will work with you to find a networking solution.



Our Services

Boardroom Technology

Plasma screens. LCD projectors. Video and audio conferencing. Why not bring all your network capabilities into the board or conference room? We will design, engineer and service integrated systems for your boardroom, auditorium, briefing room or command center. Boardroom control systems let you control a wide range of electronic equipment (audio, video, projection, lighting, screens, blinds, security and communication) from one central location.



Sound Treatment

Whether it's a busy street nearby, or a loud theater room, noise control is vital to our standard of living. Controlling unwanted noise penetration used to be out of reach to the consumer, but not anymore. We specialize in providing high performance isolation materials without the typical extreme cost. We implement time tested materials with state of the art research and development in actual usage situations. Our highly trained staff can go over the project with you to assure proper selection of materials.



Commercial Lighting Systems

Maybe you'd like to make the perfect ambiance in every part of the office. Or perhaps you're just looking for a few easy ways to save energy. Have the lights turn off automatically when employees or guests leave rooms to save on energy bills. Set lights in the waiting room to a warm, welcoming glow while lights in the conference room are bright enough for business. Program lights to dim automatically as the sun sets so your guests hardly notice a change and your team isn't running around turning lights off manually. No matter what your intention, intelligent lighting is always a bright idea.



Meeting Space Auditorium

Display screens. LCD projectors. Video and audio conferencing. Why not bring all the available network capabilities into your meeting space/auditorium? We will design, engineer and service integrated systems. Professional control systems let you govern a wide range of electronic equipment (audio, video, projection, lighting, screens, blinds and communication) from one central location.



Our Services

1 Discovery Process

The project always begins with a discovery process, where we listen to our client's needs and desires. Our preliminary interviews are relaxed yet specific, as we endeavor to balance the requirements of the client with the realities of technological trends and budget constraints.

2 System Design

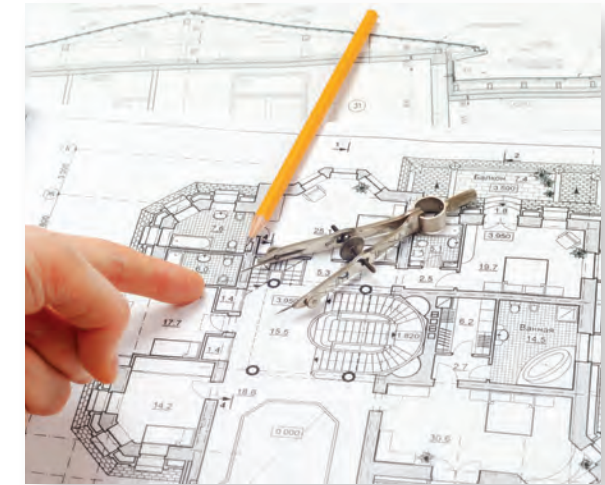
Now that pertinent information has been gathered all aspects of the project are now defined. A detailed proposal is developed in accordance to these plans. Optionally we can provide an extensive set of drawings that show graphically where all hardware and prewire drops will be located.

3 Implementation Process

Additional support documentation is created as the Rough and Trim phases commence. With then interior primed, we begin the concluding phases, order the system gear, and schedule its installation. Our job is only complete when the client is 100% satisfied with the finished product. These final phases can take a few weeks to a few months depending on the project's scale.

4 Service & Support

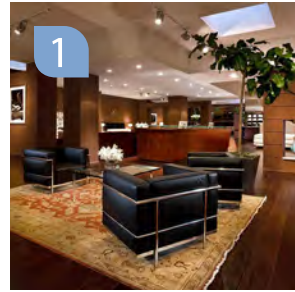
We strive to make every customer, a customer for life. We honor all manufacturers warranties plus a 12 month workmanship warranty covering all programming and installation. Opting for one of our annual maintenance agreements, the client can ensure that the investment they've made into their business is well protected and serviced for life with accuracy and diligence.



Our Process



Business Solutions



Common Areas

Audio, video and lighting control systems are a common requirement in most buildings. Key areas such as entry ways, lobbies, restaurants are all good candidates for technology solutions.



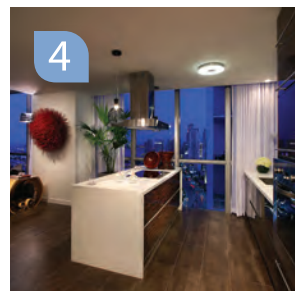
Building Infrastructure

Applicable to both common areas and building wide solutions, the necessary wiring infrastructure and conduit requirements are a key component of every successful fully integrated building technology solution.



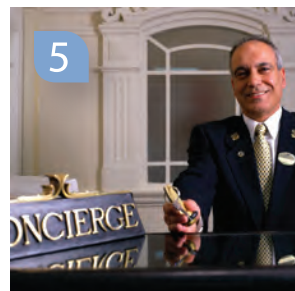
Audio/Video

Local systems may include a nice meeting room with surround sound and may extend to sound reinforcement and distributed media systems. Solutions are available at almost every price point.



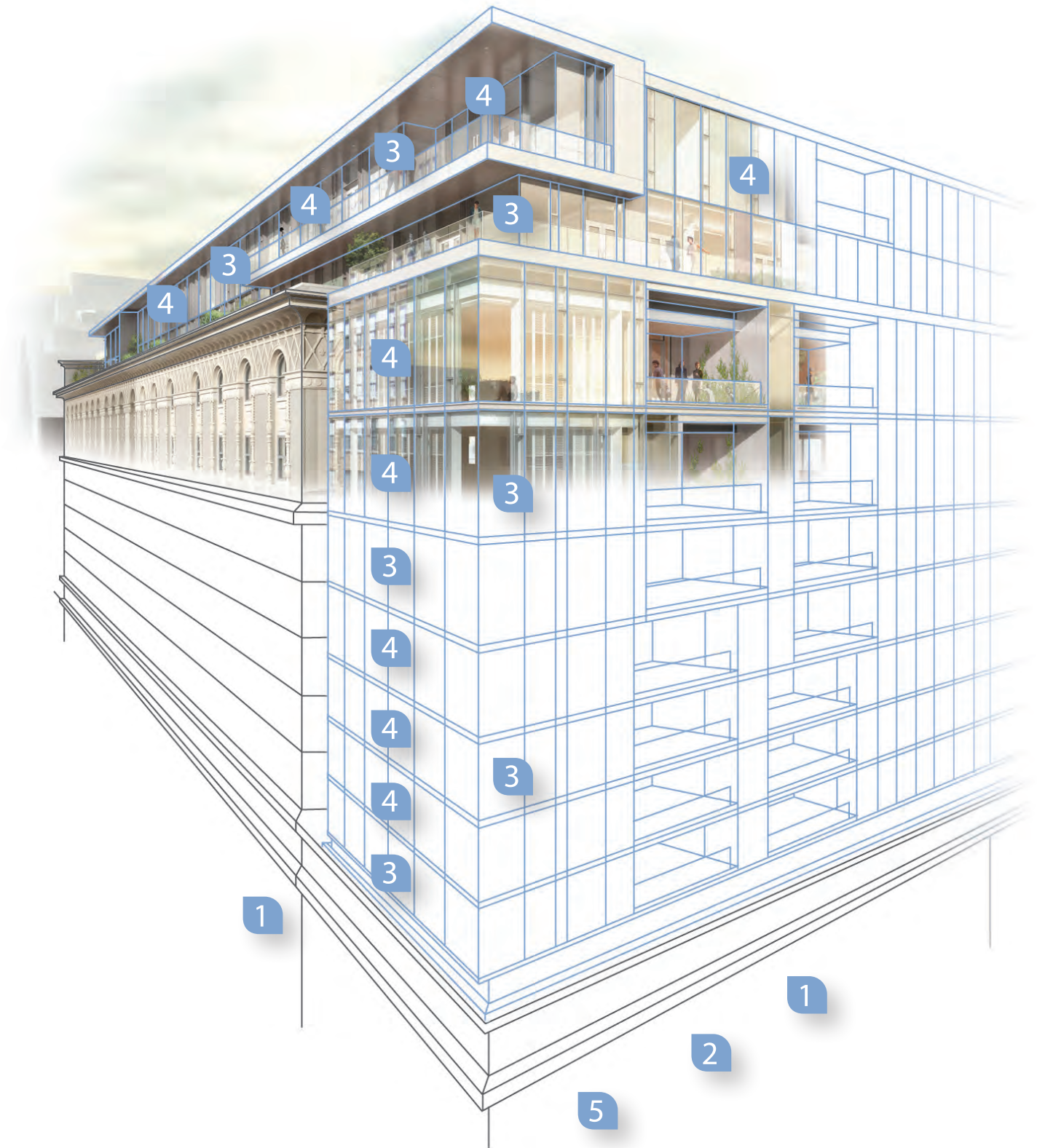
Room Control

Whether the project is new or retrofit, we have dimming systems fit for every application. Press one button to set the mood and turn your lights off from your iPhone are just a few of the solutions option available when your building is fully integrated.



Concierge Services

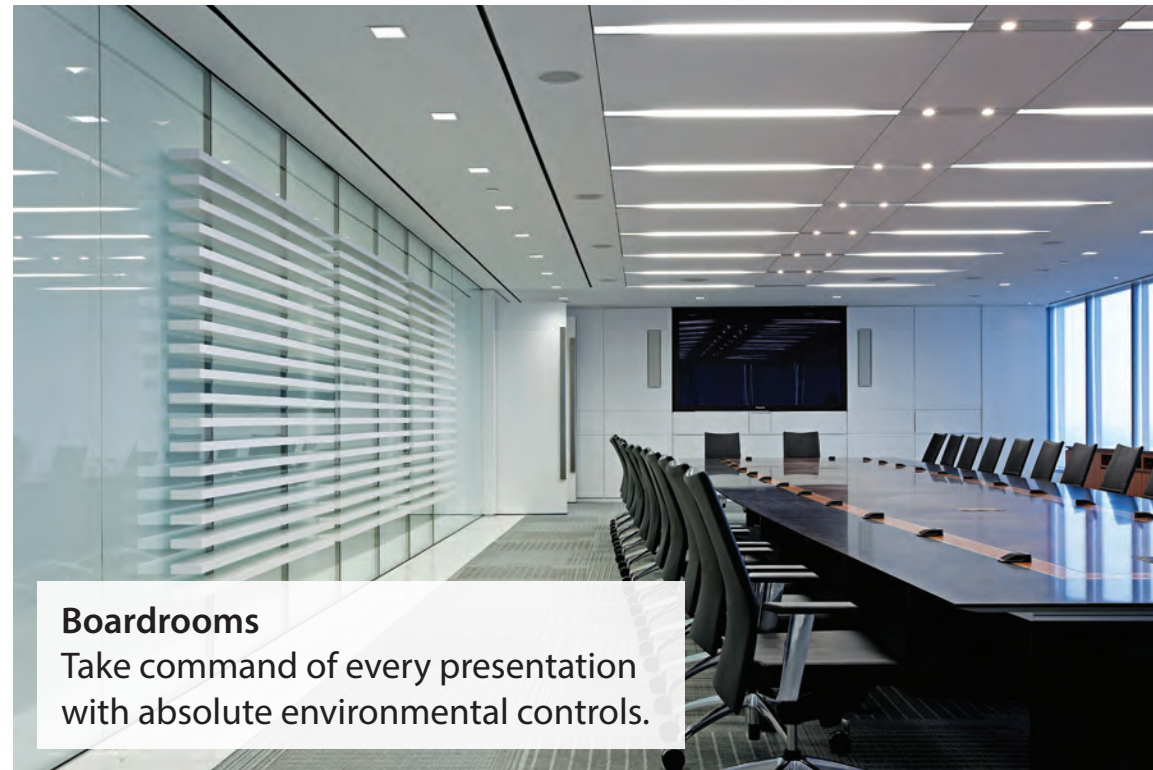
A building wide concierge system is a powerful way to help manage the client experience. Touch panels located within each apartment can be used to call a guest's car or schedule a package delivery.



Integrated Building & Hotel Technology

When a group is designing a new office space, there is a certain vision being pursued. When it comes to combining today's technologies with building management the solution is half art and half science.





✓ Increase Efficiency ✓ Increase Safety ✓ Improve Performance ✓ Reduce Energy ✓ Promote Collaboration



Office Audio/Video Solutions



Our Discovery Process

Our goal is to educate our clients on their options, and define their project scope and budget.

Creation Networks is dedicated to making sure the client’s requirements are outlined and understood prior to starting the system design. From initial concept to final construction, Creation Networks has procedures in place for thorough communication. We clearly document the client’s scope of work requirements using detailed reporting methods. This process ensures that we are engineering a system based on the customer’s goals for functionality, system aesthetics and performance.

CREATION NETWORKS

AUTOMATION & AUDIO VISUAL SOLUTIONS

Project Questionnaire

Contact Information

Client:

Name:

Office:

Business:

Title:

Mobile:

Email:

Additional Contacts

Architect

Designer

Builder/General

General Information

Address:

Approximate sq. foot:

Year built (if applicable):

Short description of the room itself:

Type of Loading-unloading and parking access:

Primary function of the job site (room):

Dimensions of room: HxLxW

Acoustical properties of the room (echoes, mechanical or outside noise, adjacent rooms):

Existing Lighting:

Existing AV features or equipment:

Existing sound system:

Electrical capacity of the room:

1 of 4

Project Q&A • Creation Networks • 925.818.8636

CREATION NETWORKS

AUTOMATION & AUDIO VISUAL SOLUTIONS

Project Questionnaire

Main Equipment Location

In Room

Remote Head End

A/V Closet

Network Setup

Router:

Provider (DSL, Cable, FIOS):

User Name/Password:

Wi-Fi/WAP:

SSID / WEP Key:

Access Control

Locations:

In-Wall iPad Dock:

In-Wall iPod Dock:

Tabletop iPad Dock:

Sub-Systems

Describe each system, including, but not limited to, manufacturer, location of equipment, # of zones/zones, and anything else you can think of for your installation.

System	Quantity	Manufacturer	Description
Audio			
Video			
Security Cameras			
Security System			
HVAC			
Lighting			

2 of 4

Project Q&A • Creation Networks • 925.818.8636

CREATION NETWORKS

AUTOMATION & AUDIO VISUAL SOLUTIONS

Project Questionnaire

Network, Voice

Motorized Shades

Pool & Spa

Gas Fireplaces

Lifts and Mounts

Misc. Equipment (include fountains, etc.)

2 Touch Panels : front entrance & bar

3 of 4

Project Q&A • Creation Networks • 925.818.8636

CREATION NETWORKS

AUTOMATION & AUDIO VISUAL SOLUTIONS

Project Questionnaire

Room Equipment

This page is repeated for each room in the configuration. Categories: Displays, Audio Sources, Video Sources, Control, Speakers, Lights, TSTAT, Cameras, Security, OSD, 5:1, 7:1, Resolutions, Remotes, Keyboard, Mobile Devices, Mounts, Drapes, Shades.

Room:	Category	Qty	Item	Inputs/Outputs/Address
Displays:				
Audio Sources:				
Video Sources:				
Control:				
Speakers:				
Lights:				
TSTAT:				
Camera:				
Security:				
On Screen Display:				
5:1 or 7:1 Surround:				
Video Resolutions:				
Remotes / Keyboard:				
Mobile Devices:				
Mounts:				
Drapes / Shades:				

Automation/Customization

This page is repeated for each room in the configuration. Categories: Macros, Widgets, Graphics, Custom Features

Category	Item	Description
Widgets:		
Graphics:		
Macro:		
Custom Features:		

4 of 4

Project Q&A • Creation Networks • 925.818.8636

Project Questionnaire

CREATION NETWORKS



Our Design Process

Our goal is to design and effectively communicate the best solution that meets the project scope and budget requirements.

Time Inc.



AV ABBREVIATIONS

A.F.C	Above Finished Ceiling	I.G.	Isolated Ground
A.F.F	Above Finished Floor	INC.	Incorporated
AMP	Ampere	L	Left
A/R	As Required	L.	Long (Length)
ARCHT	Architectural	LAN	Local Area Network
A.V.C	Audiovisual (Systems) Contractor	LTD.	Limited
AV	Audiovisual	L.V.	Low Voltage
BLDG.	Building	MAX.	Maximum
C.	(Empty) Conduit	Min.	Minimum
CKT.	Circuit	MTD	Mounted
C.L.	Centerline	Net	Network
C-VID	Composite Video	N.T.S.	Not To Scale
D.G.	Dedicated Ground	PWR	Power
DIST.	Distance	QTY.	Quantity
DN	Down	R&S	Ring and String
DP.	Deep (Depth)	R	Right (Location)
DVD	Digital Video Player	REQ'D	Required
(E)	Existing	RGBHV	R/G/B Horiz/Vert. Sync
E.C.	Electrical Contractor	SPKR	Speaker
ELECT'L	Electrical	STD.	Standard
ETC.	Et Cetera (And So Forth)	T.B.D.	To Be Determined
FLR	Floor	TEMP.	Temporary
G.C.	General Contractor	TYP.	Typical
H.	High	U.O.N.	Unless Otherwise Noted
HD-V	High Definition Video	V	Voltage
HT.	Height		

AV SYMBOLS LEGEND



AV RECOMENDATIONS

- MECHANICAL**
- HVAC and mechanical systems should be designed with an NC rating of 25-30, STC rating of 45-55.
- ACOUSTICAL**
- Minimum two (2) walls with acoustically treated wall paneling. (1 wall per parallel surface).
 - 100% acoustical ceiling tiles or acoustical ceiling panels
 - 100% carpeted flooring
 - Drapes for glass or windows.
- LIGHTING**
- 4-Zone
 - Recommended lighting zones: Front display wall, wall washers, center fluorescent lights and center down lights.
 - Lights near display should be on independent zone.
 - For video conferencing rooms: Do not mix fluorescent/incandescent/halogen lighting. Halogen lights are not recommended for these types of rooms. Indirect fluorescent lighting, at a 45-degree angle, will help minimize shadows on participants' faces.
 - The lighting level at the table surface should be 740 lux or 69FC.
- COLORS AND FINISHES**
- For video conference rooms: Rear wall should have no patterns and consist of a light solid color (i.e. light blue, light gray, or beige). White walls should not be used.
 - Table finish should be a light wood. Avoid white or dark wood finishes

AV ARCHITECTURAL NOTES

- Verify all sizes, dimensions, and locations with the architectural drawings. Where discrepancies occur, the architectural drawings take precedence.

All Audiovisual equipment – except AV equipment furnished by audiovisual contractor and installed by the general/electrical contractors – is for reference only. Unless noted otherwise, audiovisual equipment shall be furnished and installed by the A.V.C., not the G.C.; confirm no jurisdictional problems.

All construction work shown on these drawings shall be by the general contractor, U.O.N.

Where exact dimensions are not indicated on these drawings, the drawing may be scaled appropriately for determining approximate locations of equipment.
- AV Rack requires a 15 AMP circuit & 2 Outlets

All 3 Projectors will require outlet next to projector location

3 Projectors requires one 1/2" conduit run to back of rack for each unit-

The 4th projector will share conduit from front Projector

There will be a required 2 gang box installed for AV cable runs at rack location

Power will be located next to AV junction box

AV ELECTRICAL NOTES

- All electrical work shown on the audiovisual system drawings shall be for reference only. Refer to the electrical engineering drawings for exact locations, circuiting, and actual routing of conduit and electrical power.
- Verify sizes, dimensions, and locations with the architectural drawings. Where discrepancies occur, the architectural drawings shall take precedence.
- All work shall be performed in accordance with national, local, and other applicable codes.
- Audiovisual equipment shall be installed by the A.V.C., and not the general contractor, except where noted otherwise. All construction work shall be by the G.C., except where noted otherwise.
- Where exact dimensions are not indicated, the drawing may be scaled to determine locations of equipment, junction boxes, ETC. Where exact dimensions are needed, the reference surface shall be the final finished surface, including any acoustical treatment.
- Where AC power or audiovisual junction boxes are to be placed adjacently, install back boxes with sufficient separation for cover plates.
- All audiovisual system AC power shall be on dedicated 'audiovisual power' circuits protected by 20 ampere breakers, U.O.N.
- All audiovisual system AC power circuits shall be kept isolated from lighting dimmers, large motorized equipment (Fans, Refrigerators, etc.) and other inductive ('noisy') electrical loads.
- Audiovisual system wiring shall be plenum-rated cable in all areas with accessible ceiling and floor plenums, U.O.N.
- Conduit runs shown on these drawings show only interconnection between points. The exact path of all conduit runs shall be coordinated in the field.
- There shall be a minimum of one (1) pull box for every 100 feet [30.5m] of run, with an extra pull box for every 90 degree bend in conduit run. Pull boxes will not be located above GYP. Board [inaccessible] ceilings.
- "Building standard electrical switch height" shall be determined by the architectural drawings.
- "Building standard base electrical height" shall be determined by the architectural drawings.
- All empty conduit shown on these drawings shall be de-burred, cleaned, capped, tagged, and furnished with pull-strings.
- All audiovisual junction boxes, AC power receptacles, and conduits shall be marked "For AV use only".
- AC power receptacles shown on these drawings are dedicated for use with specific audiovisual, data, and communications equipment. Additional utility ("Convenience") AC power receptacles shall be provided as indicated on the architectural drawings, or as required by code.
- Where possible, empty conduit runs for audiovisual system wiring shall be kept four (4) feet [1220mm] from parallel AC power circuits, and two (2) feet [610mm] from perpendicular AC power circuit crossings. Empty conduits for audiovisual system wiring shall not run parallel to AC power circuits closer than four (4) feet [1220mm] for distances exceeding twenty (20) feet [6.1m].
- Where possible, cable trays for audiovisual system wiring shall be kept six (6) feet [1830mm] from parallel AC power circuits, and three (3) feet [900mm] from perpendicular AC power crossings. Cable trays for audiovisual system wiring shall not run parallel to AC power circuits closer than six (6) feet [1830mm] for distances exceeding twelve (12) feet [3.6m].
- All non-accessible ceiling plenum areas shall have continuous conduit.

Creation Networks Inc
1009 Shary Circle, Suite D

Concord, CA 94518
925-446-4332

Created 1/23/2013
Modified 3/27/2016
Printed 8/18/2015

Time, Inc.

One Embarcadero, 7th Floor
San Francisco, Ca.

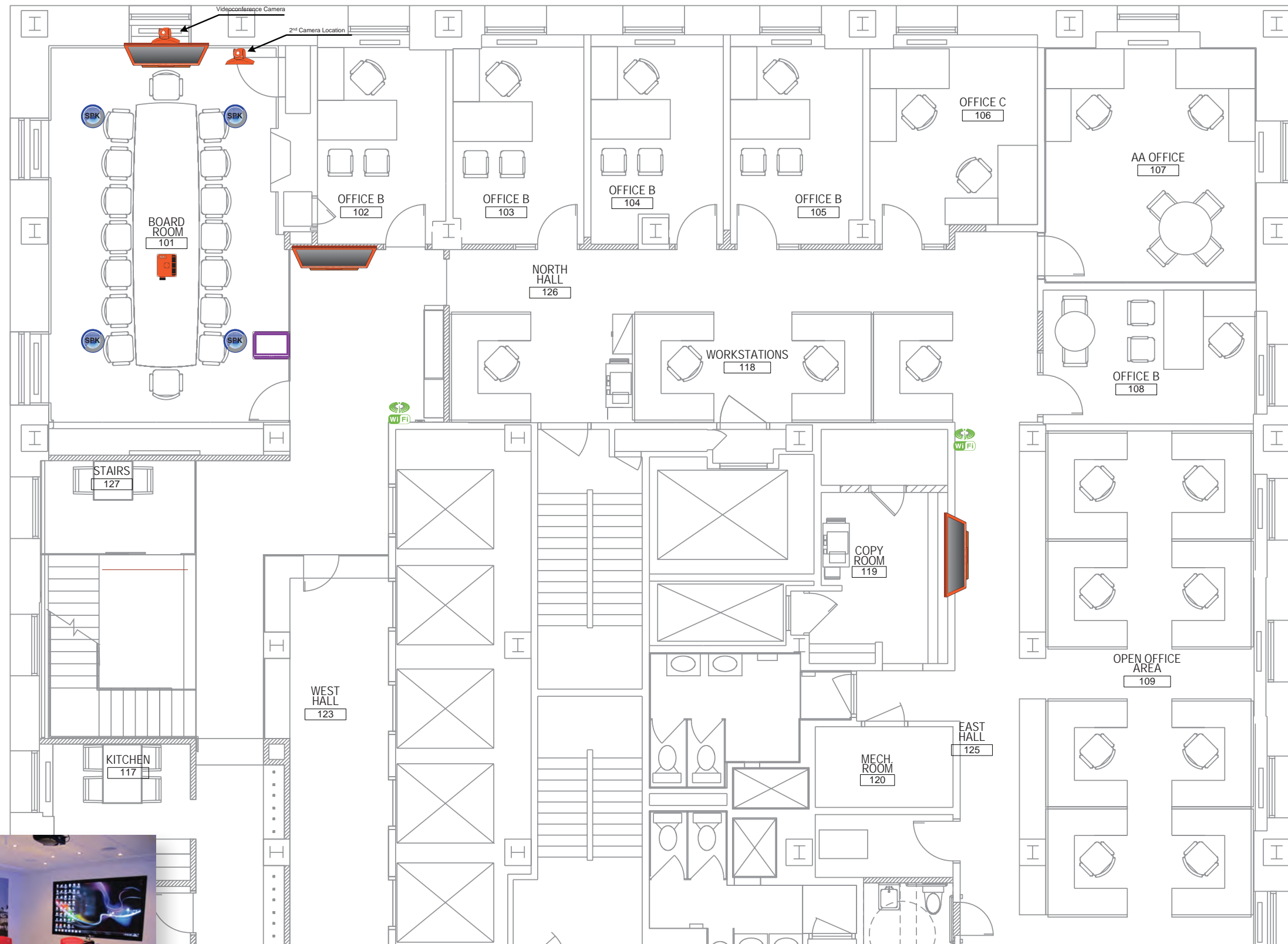
Cover Sheet

1

Drawing Sheet Cover


We provide our customers with a complete set of drawings during every phase of the project. In the beginning, we help you understand our proposal by also providing engineering drawings showing you the locations of all devices within the system. At the completion of the project you will also receive an "As-Built" set of engineering drawings for your records.





Device Location Drawing

Displays the location for every AV location based on hardware requirements. Used primarily during the sales phase of the project to convey information to our future customer.



Proposal

Prophet A/V

CBF

45 Broadway
San Francisco, CA



CREATION NETWORKS


AUTOMATION & AUDIO VISUAL SOLUTIONS

Presented By:

Creation Networks, Inc.
730 San Bruno Court
Concord, California 94518 USA
925.818.8638
www.creationnetworks.net

Modified: 3/11/2014

Revision: 0



Creation Networks, Inc.

Floor: main: Main Conference Room

Display Devices

1

Mitsubishi WD720U

DLP, 0.65" 1-Chip DMD, 1280 x 800, up to 3,000 hours lamp life, 28 dB, 40" to 300" image size, 4300 ANSI lumens, 3000:1 contrast, 1.5 to 2.2 throw, vertical lens shift, computer-free presentation, Crestron RoomView, 10W speaker, inputs: 2 mini D-sub (15 pin), HDMI, RCA, S-Video, (2) 3.5mm stereo mini jack, outputs: mini D-sub (15 pin), 3.5mm stereo mini jack, RS232C, LAN terminal (RJ45), 13.6"W x 5.3"H x 10.6, 9 lbs., white.

\$2,995.00

Display Devices Total: \$2,995.00

Mounts

1

Chief RSMA245

Ideal for smaller projector models, these miniature versions of the RPA Elite mounts include all the same great features in almost half the size.

\$229.00

Mounts Total: \$229.00

Package

1

Wiring Assembly - Home Theater - Projector Prewire

Wiring Assembly - Home Theater - Projector Pre-wire

\$399.00

1

Wiring Assembly - Room Audio with Control

Wiring Assembly - Distributed Audio - Wiring for 1 pair of speakers with touchscreen or keypad control.

\$125.00

Package Total: \$524.00

Screens

1

Da-Lite 88389LS

54 x 96" 106" Diagonal size Matte White, Contour Electrol screen - HDTV Format - With its stylish curved aluminum extruded case available in either black, white or graphite finish, the Contour Electrol is a beautiful addition to any installation. Screen surface retracts completely into the case for a clean, modern appearance when screen is not in use. An optional choice of seven veneer finishes are also available for the front cover of the screen case for a warm, elegant look.

\$1,297.00

Screens Total: \$1,297.00

Speakers

* Price Includes Accessories

Presented By: Creation Networks, Inc.

Project Name: Prophet A/V

Project No.: CREAT-1125

Page 2 of 8

3/11/2014



Creation Networks, Inc.

Floor: main: Small Conference Room

Display Devices

2

Mitsubishi WD390U-EST

DLP, 0.65" 1 chip DMD, 1280 x 800, ultra short throw lens (.375), 230W lamp with up to 6000 hours life, 28 dB noise level, 70" to 180" image size, 3000 ANSI lumens, 3000:1 contrast, PC less presentations with USB drive, visual PA, 10W mono speaker, inputs: 2 mini D-sub (15 pin), HDMI, dual 3.5 mm, RCA, S-Video, RS232C compatibility, LAN terminal (RJ45), outputs: mini D-sub (15 pin), 3.5 mm.

\$2,598.00

Display Devices Total: \$2,598.00

Mounts

2

Chief RSMA245

Ideal for smaller projector models, these miniature versions of the RPA Elite mounts include all the same great features in almost half the size.

\$458.00

Mounts Total: \$458.00

Package

2

Wiring Assembly - Home Theater - Projector Prewire

Wiring Assembly - Home Theater - Projector Pre-wire

\$798.00

2

Wiring Assembly - Room Audio with Control

Wiring Assembly - Distributed Audio - Wiring for 1 pair of speakers with touchscreen or keypad control.

\$250.00

Package Total: \$1,048.00

Screens

2

Da-Lite 88389LS

54 x 96" 106" Diagonal size Matte White, Contour Electrol screen - HDTV Format - With its stylish curved aluminum extruded case available in either black, white or graphite finish, the Contour Electrol is a beautiful addition to any installation. Screen surface retracts completely into the case for a clean, modern appearance when screen is not in use. An optional choice of seven veneer finishes are also available for the front cover of the screen case for a warm, elegant look.

\$2,594.00

Screens Total: \$2,594.00

Speakers

4

JBL Pro CONTROL 26CT

The Control 26CT is a powerhouse ceiling speaker containing a coaxially mounted 6.5" woofer and 3/4" titanium-coated tweeter, able to deliver maximum sound level over a wide coverage area. The Control 26CT includes a multitap transformer for a 70V or 100V line distribution system.

\$784.00

* Price Includes Accessories

Presented By: Creation Networks, Inc.

Project Name: Prophet A/V

Project No.: CREAT-1125

Page 4 of 8

3/11/2014



Project Proposal

We provide our clients with detailed system design proposals that outline every piece of hardware required to properly execute the project. We detail this information with breakdowns for every room and area.



Speakers Total: \$784.00

Floor: main: Small Conference Room Total: \$7,482.00

Floor: main: Open Area

Display Devices

1 Sony XBR-55X900A

\$4,999.00

The Sony 55" XBR-55X900A X900 Series 4K Ultra HD 3D Internet TV features a 2D/3D LCD panel with 4K 3840 x 2160 resolution and Dynamic Edge LED Backlight technology that enhances contrast and reproduces images with sharp clarity. The Ultra HD TV also features built-in Wi-Fi, Ethernet connectivity, Miracast wireless mirroring and Mobile High-Definition Link (MHL). With Wi-Fi, you can stream a variety of Internet content from the Sony Entertainment Network, as well as DLNA home network content. Miracast, MHL and NFC technologies allow you to connect your compatible mobile device to the TV, so you can mirror your mobile media on the TV's big 4K screen. Besides Dynamic Edge LED Backlight technology, the X900 Series is also equipped with a 4K X-Reality PRO chip that not only enhances images by analyzing and refining them, it actually supports upscaling to 4K Ultra HD resolution

Display Devices Total: \$4,999.00

Mounts

1 Chief PNRIWUB

The PNRIW is a dual arm in-wall swing arm m

profile installation.

* Price Includes Accessories

Presented By: Creation Networks, Inc.

Project Name: Prophet A/V

Project Proposal

The final page of the proposal is the most important, as it outlines and summarizes all final details including the following:

- ✓ Summary of all hardware fees by subsystem
- ✓ Summary of all labor fees
- ✓ Summary of all other fees
- ✓ Client signs this page agreeing to final project price

Project Summary

Equipment: \$50,234.00

Miscellaneous Hardware: \$1,256.05

Labor: \$6,757.53

Sales Tax: \$4,634.10

Misc. Items: \$20,000.00

Grand Total: \$82,881.68

Client: Bradley Onstad

Date

Contractor: Creation Networks, Inc.

Date

* Price Includes Accessories

Presented By: Creation Networks, Inc.

Project Name: Prophet A/V

Project No.: CREAT-1125

Page 8 of 8

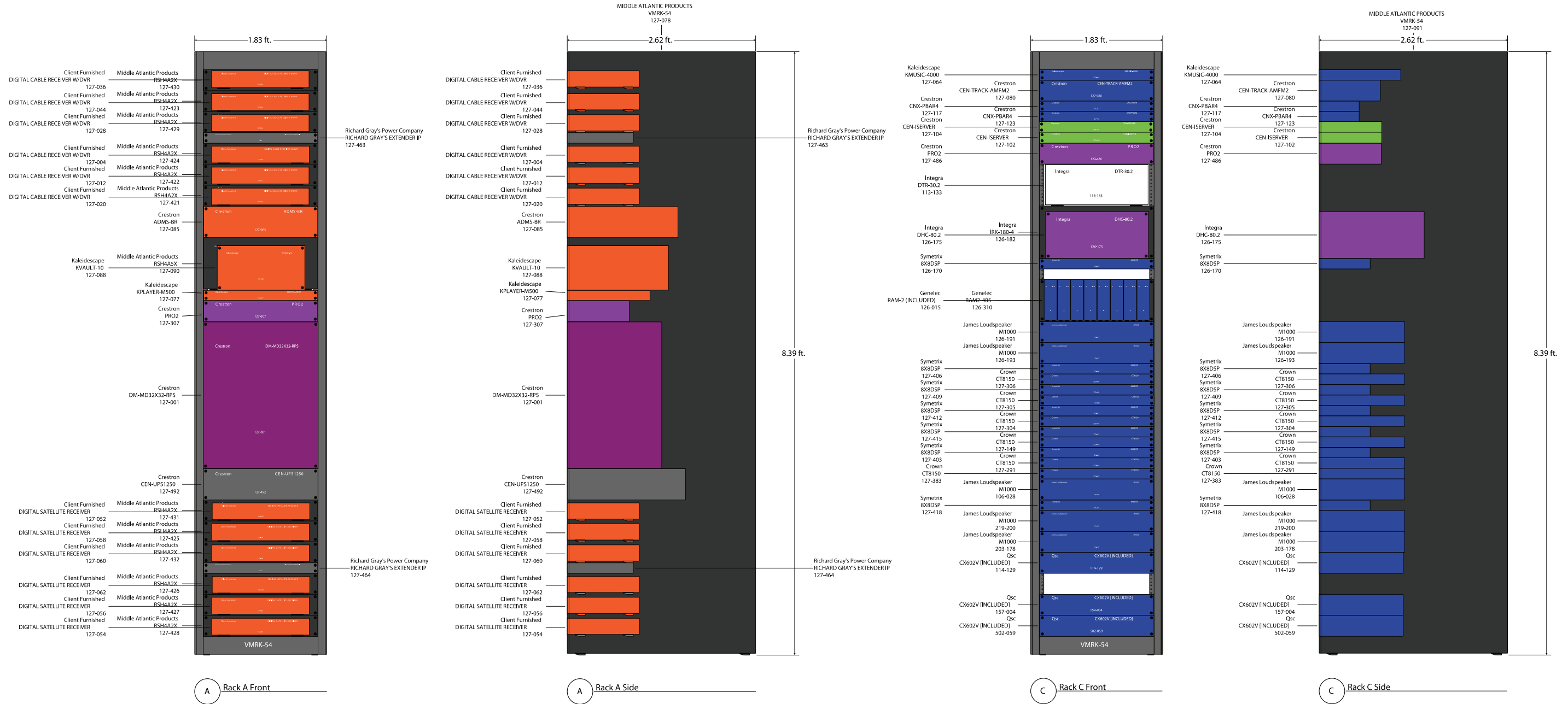
3/11/2014





Construction Documentation

Documents created by our engineering team to help aid communication and help ensure an accurate installation.



Rack Elevations

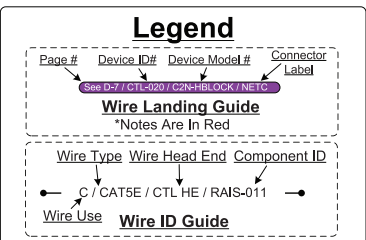
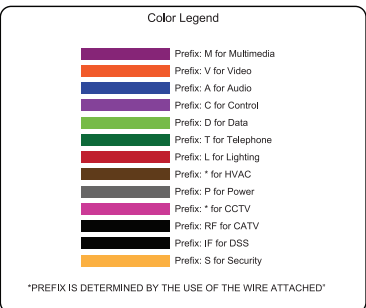
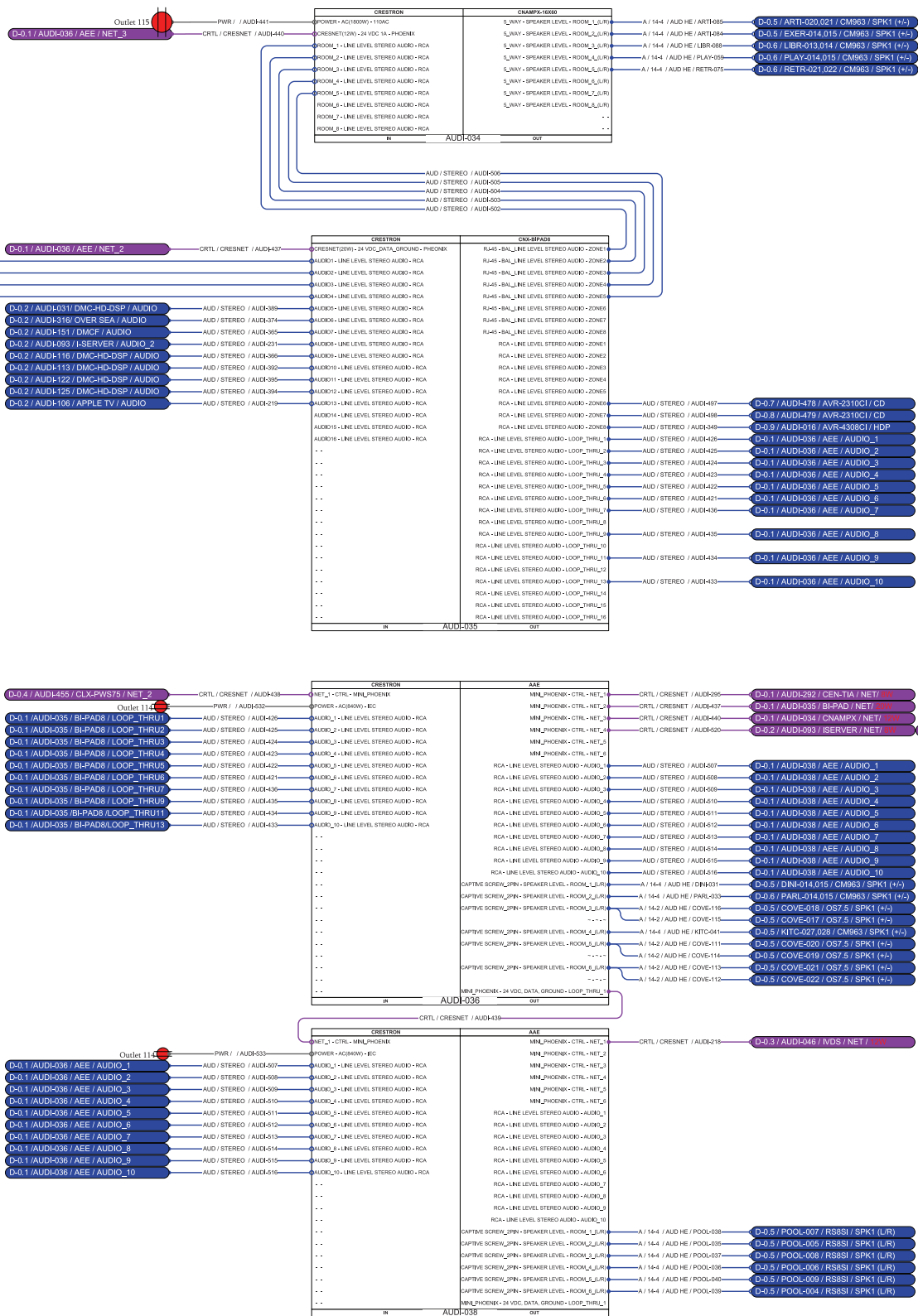
We design the system rack layout with standards and precise detail to ensure a smooth installation.

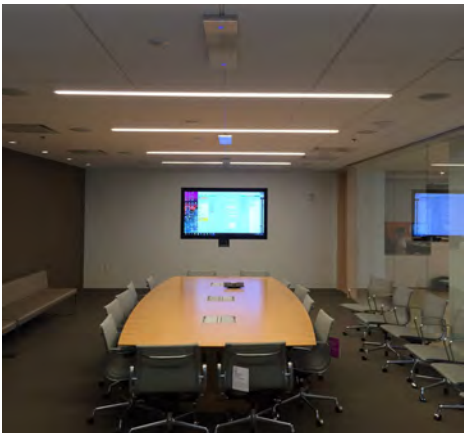
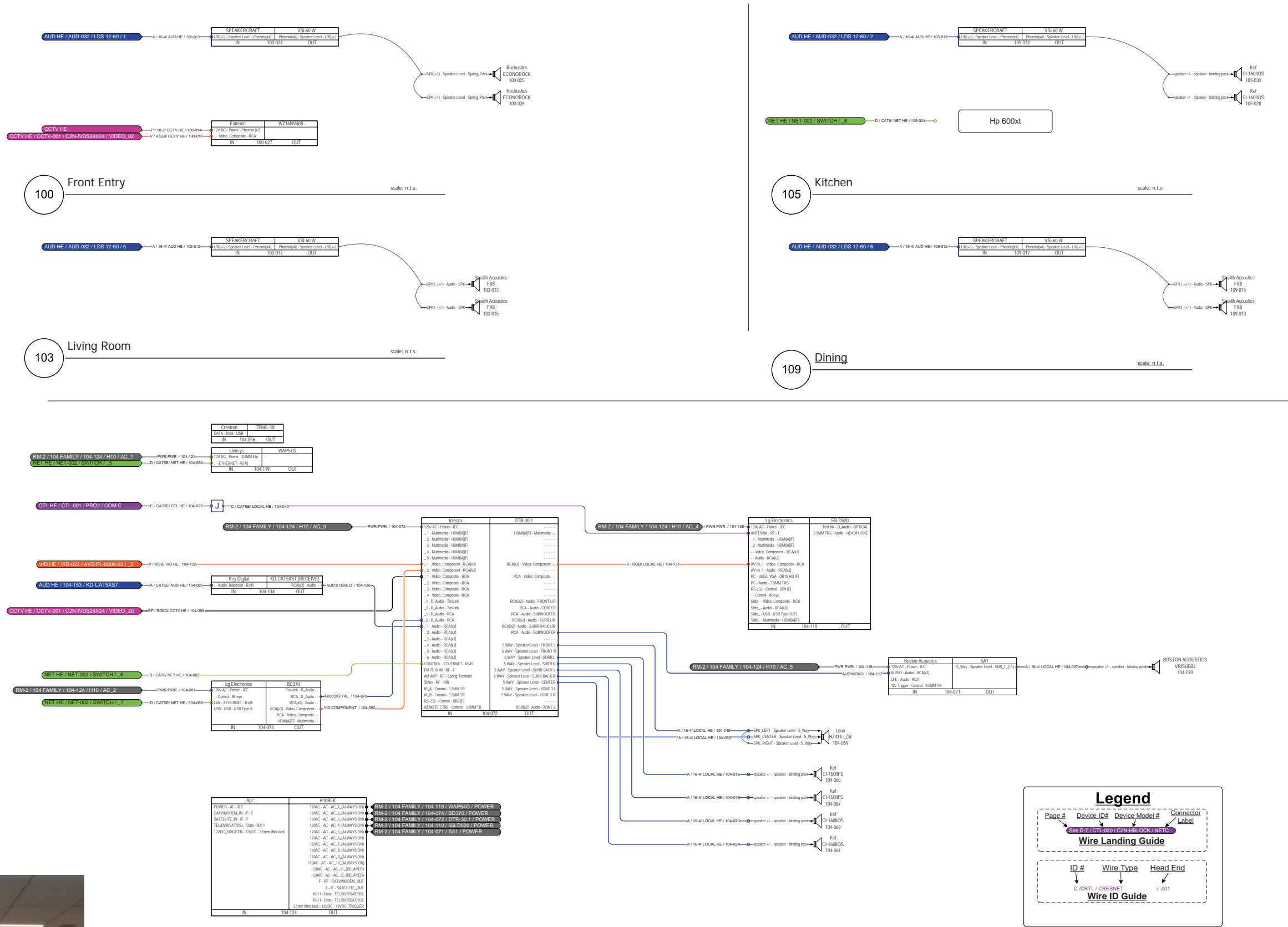


Head-End Schematics

Displays the detailed inputs and outputs for system hardware.

This ensures that our well trained install team wires and programs your system per your requirements.

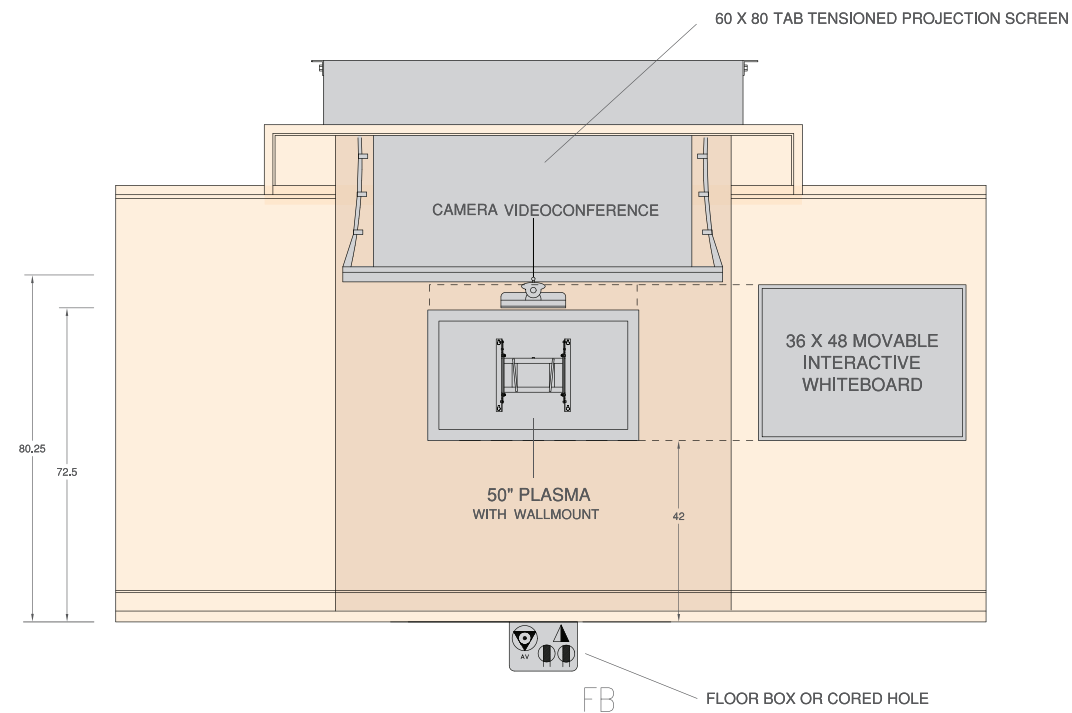




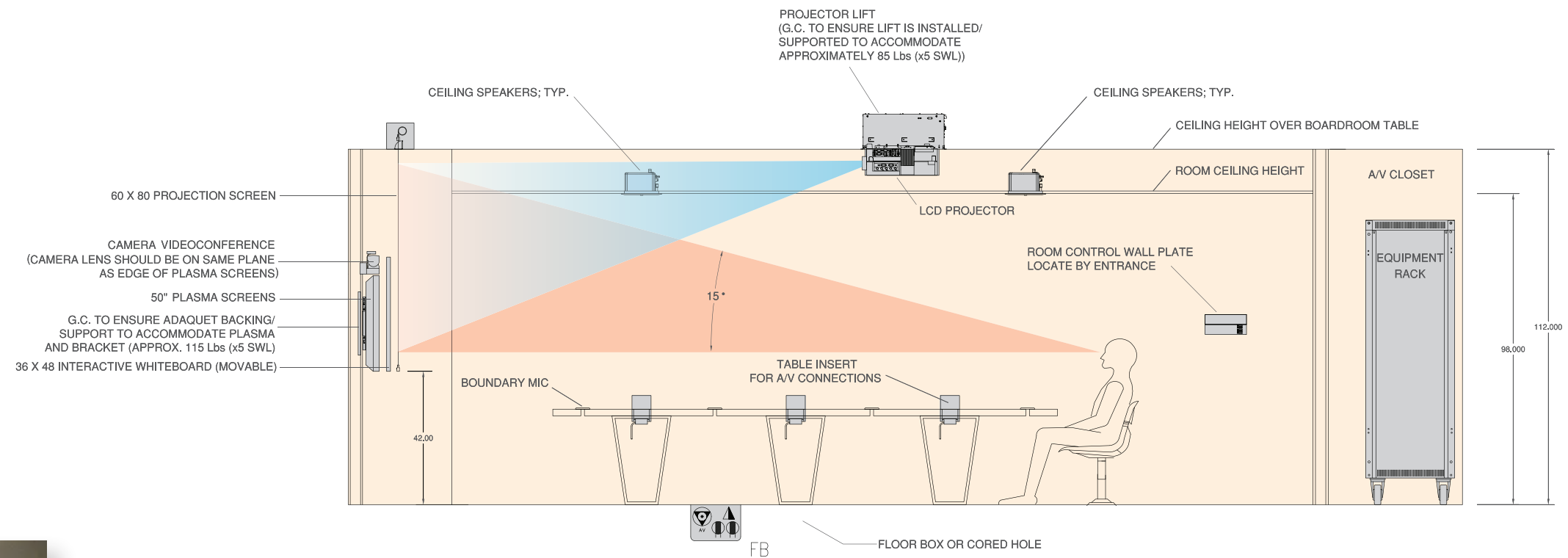
Room Schematics

Displays the detailed inputs and outputs for system hardware. This ensures that our well trained install team wires and programs your system per your requirements.





1 **ELEVATION VIEW OF RECESSED A/V ALCOVE**
SCALE: NTS



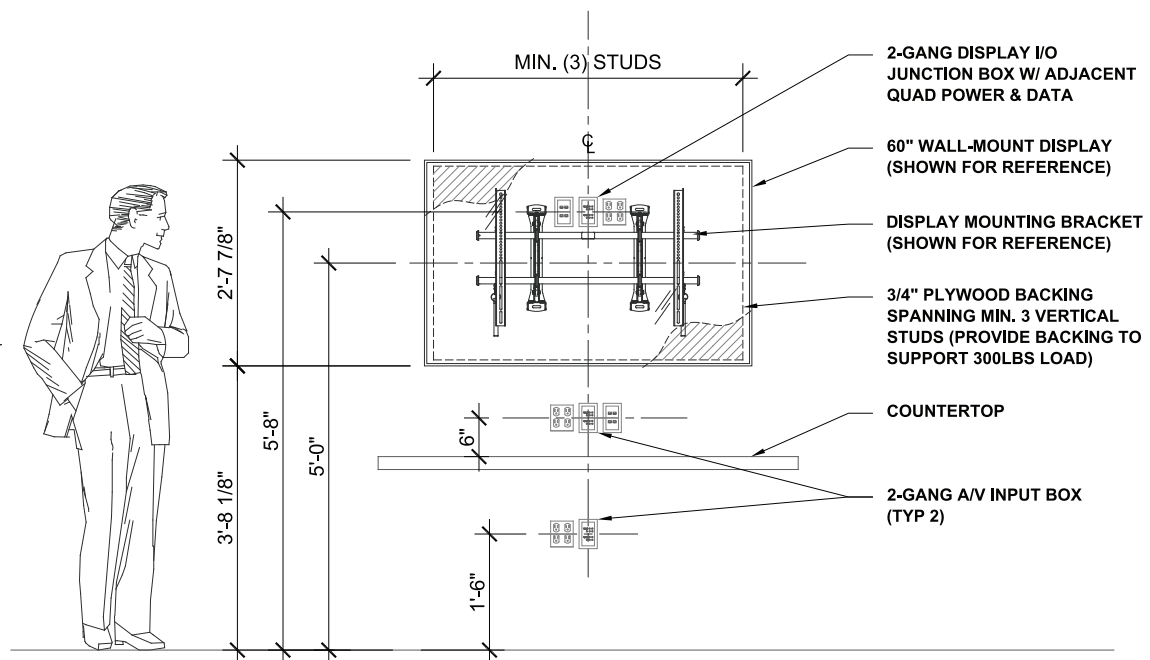
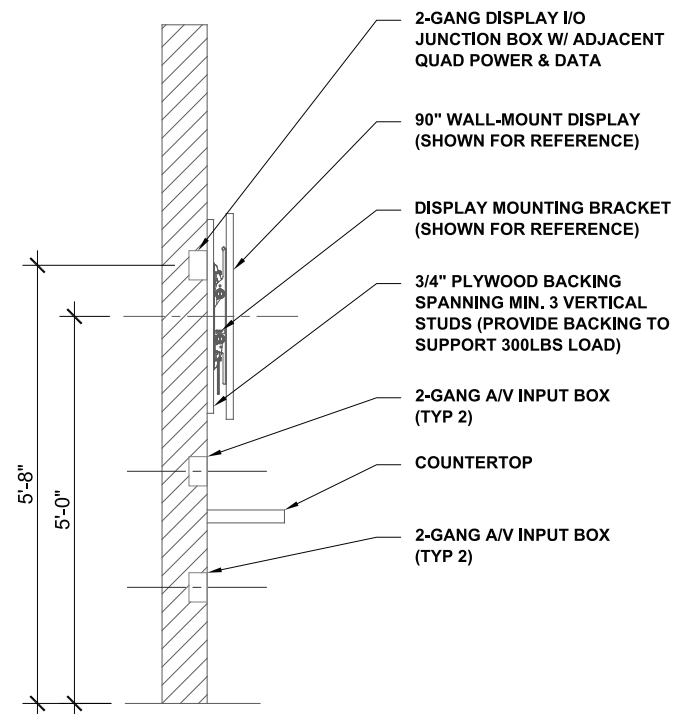
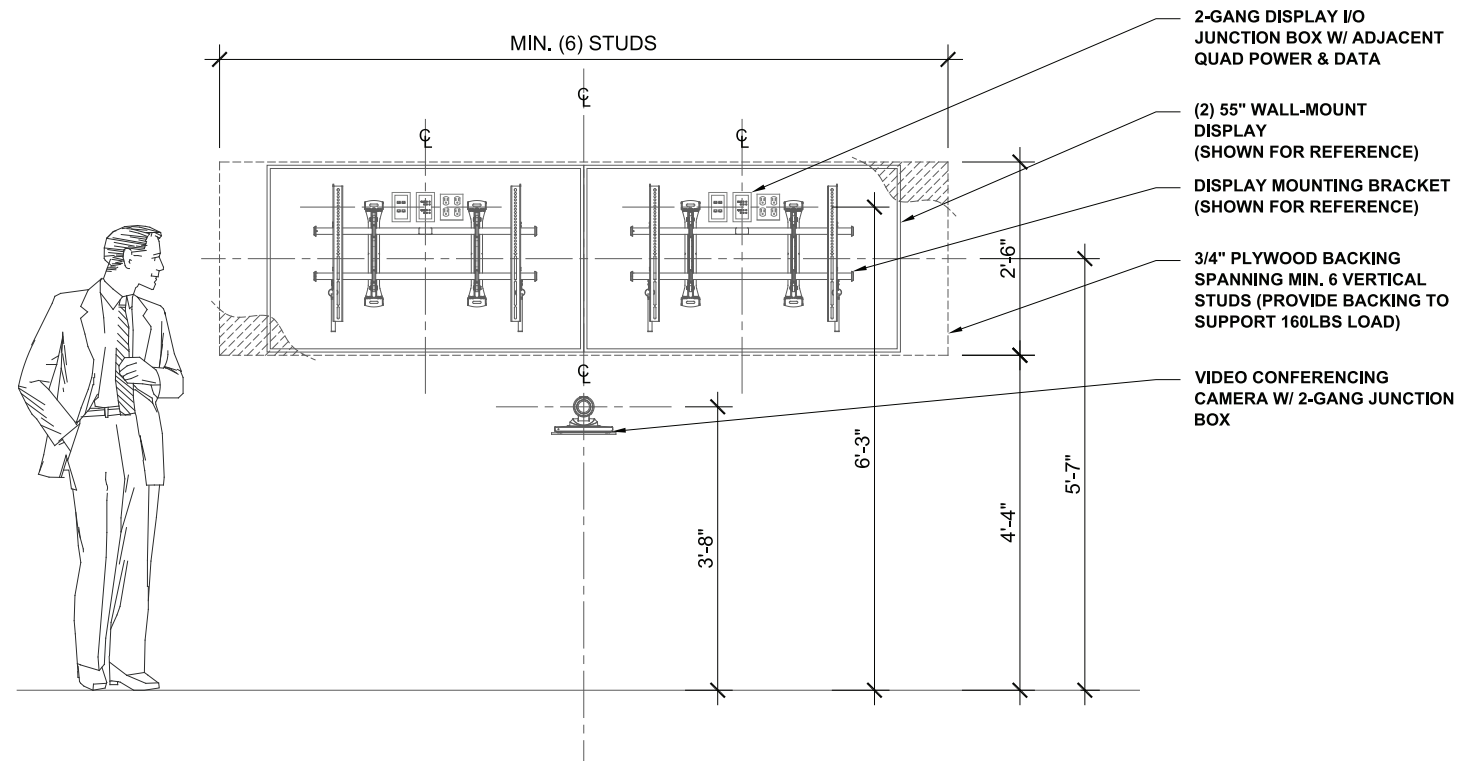
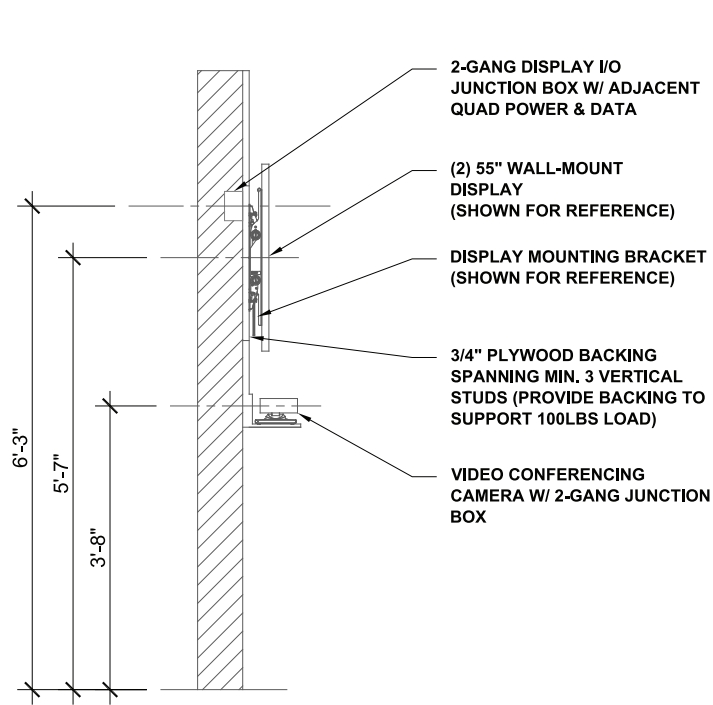
2 **BOARDROOM ELEVATION VIEW**
SCALE: NTS



Commercial Boardroom Design

We offer a full compliment of audiovisual solutions for commercial spaces.

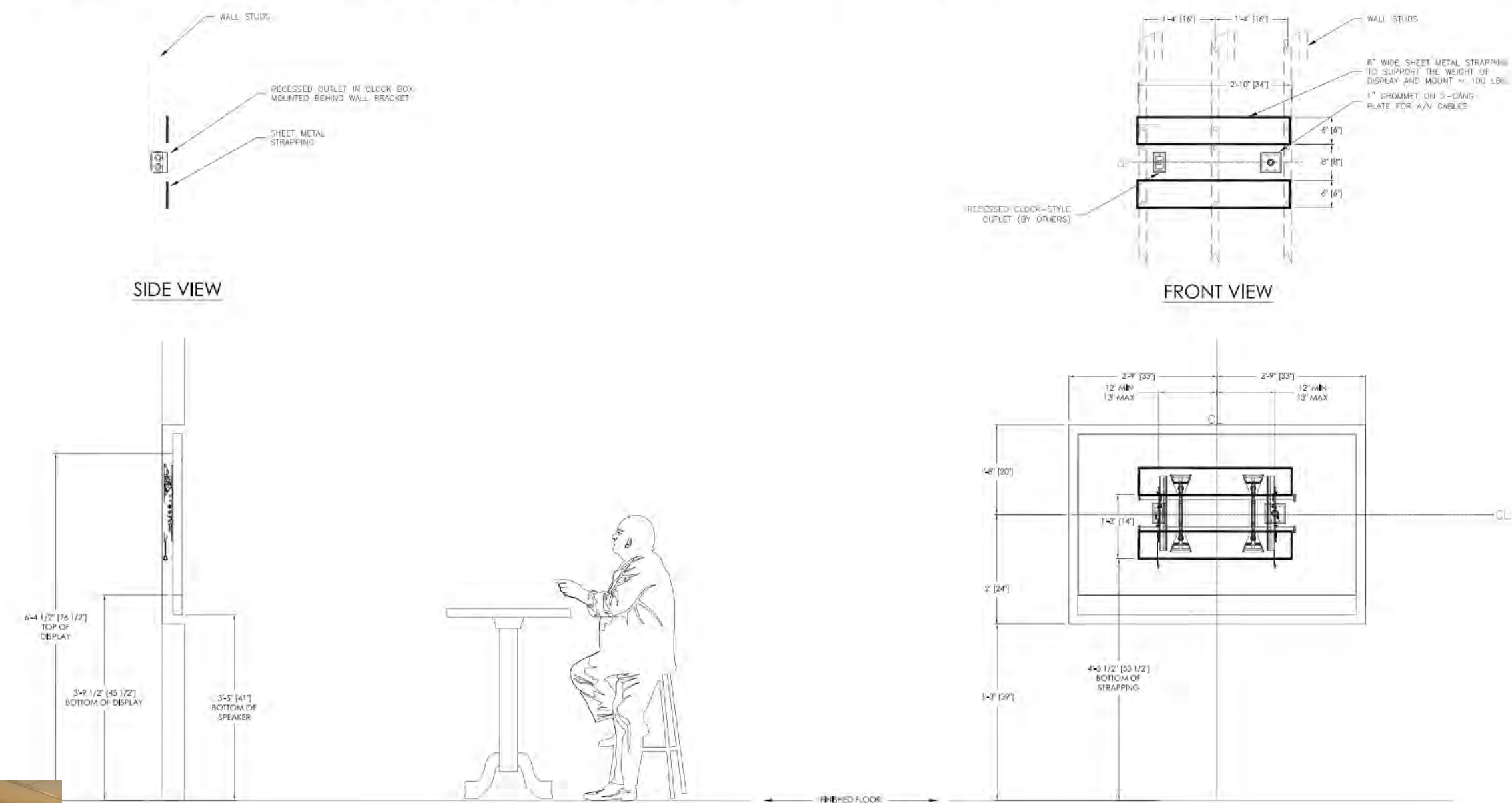




Display Elevations

We create drawings with the finest level of detail to meet your project requirements.

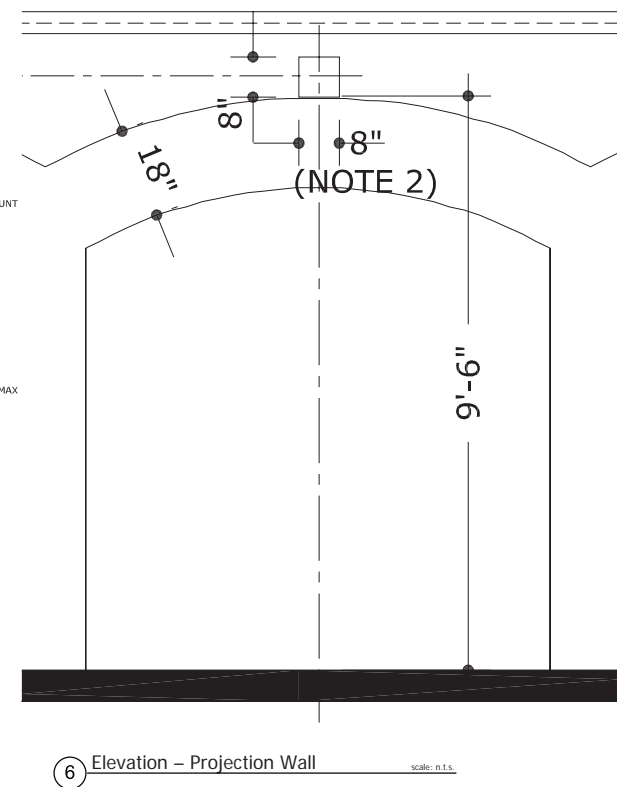
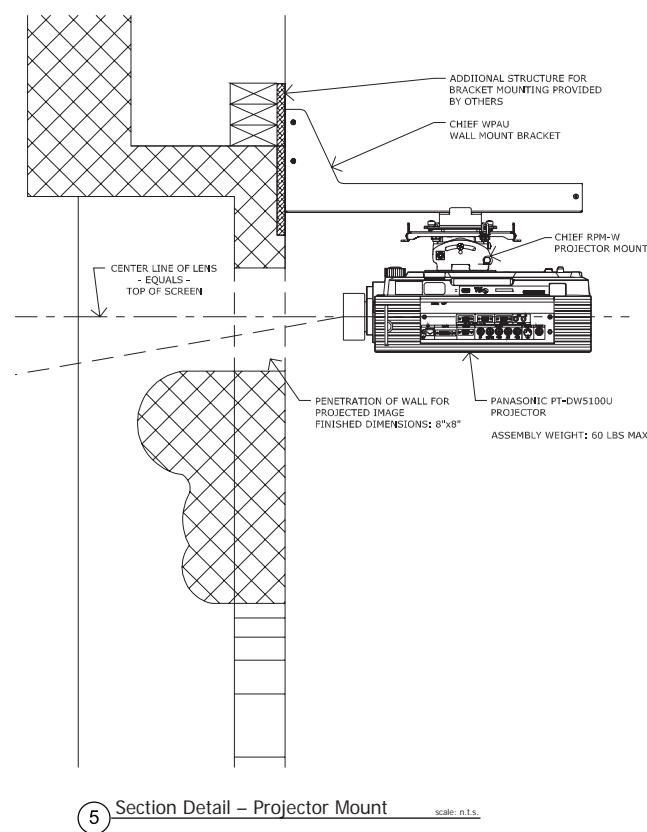
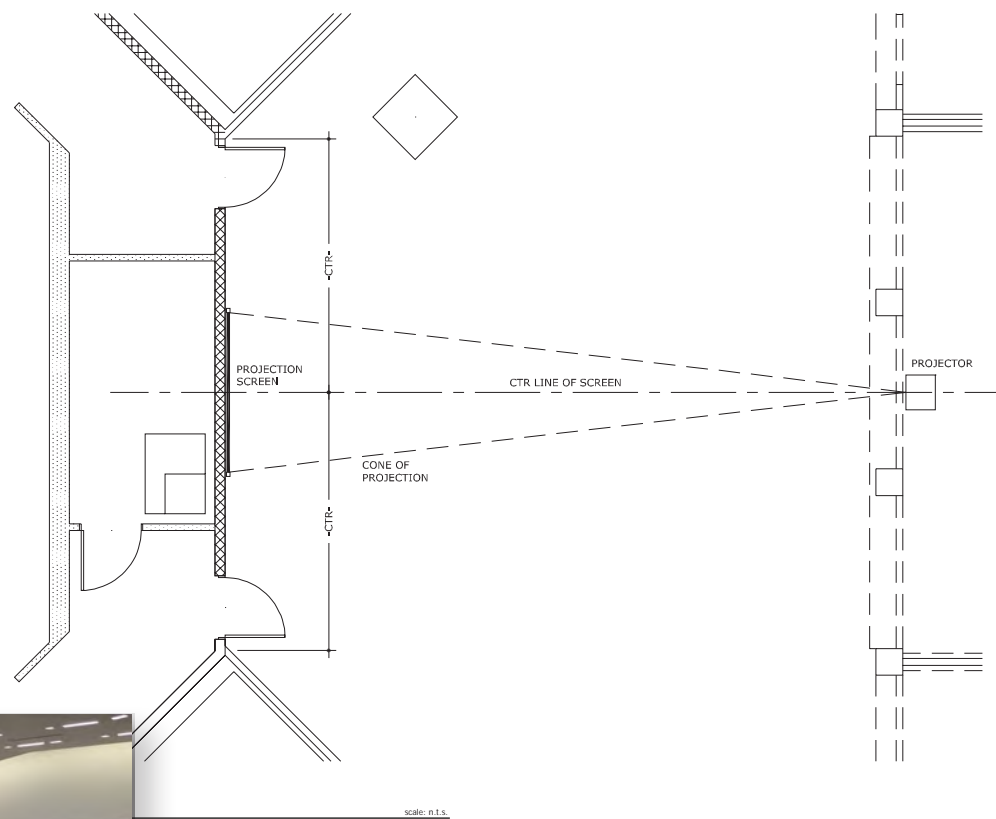
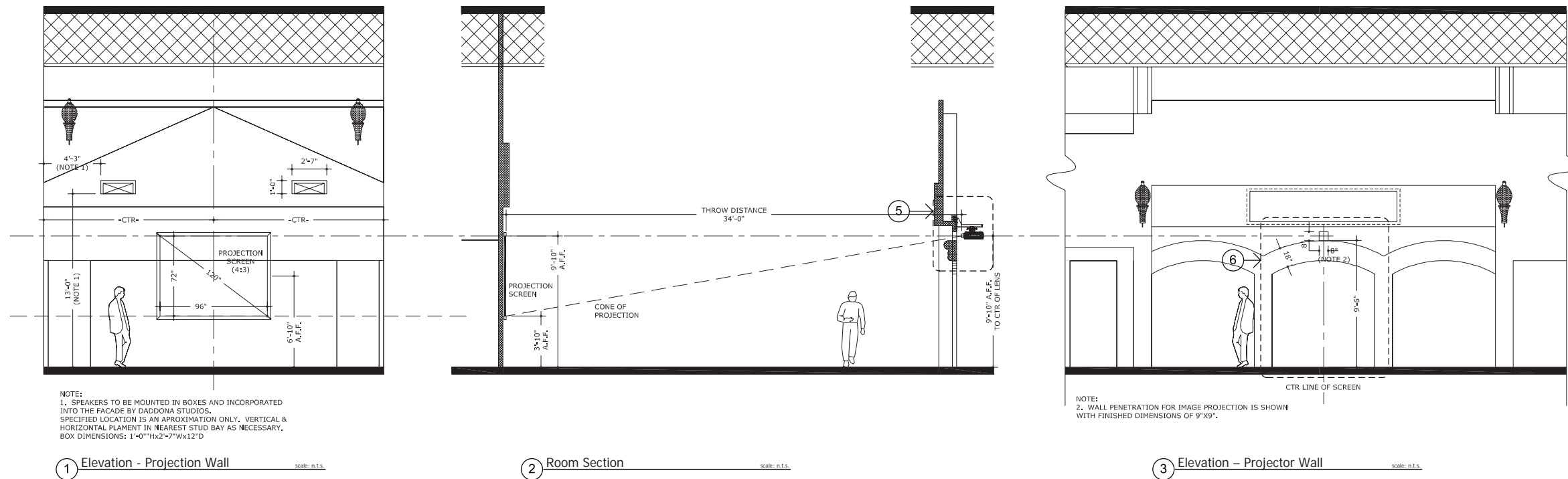
4232 BREAKROOM - 60" DISPLAY WITH SPEAKER



Room Elevations

Throughout the entire design, engineering and installation process, we work closely with your architect, designer and contractors to ensure the most professional and rapid completion of your AV system.





Drawing Package

We create drawings with a high level of detail to ensure a successful installation.



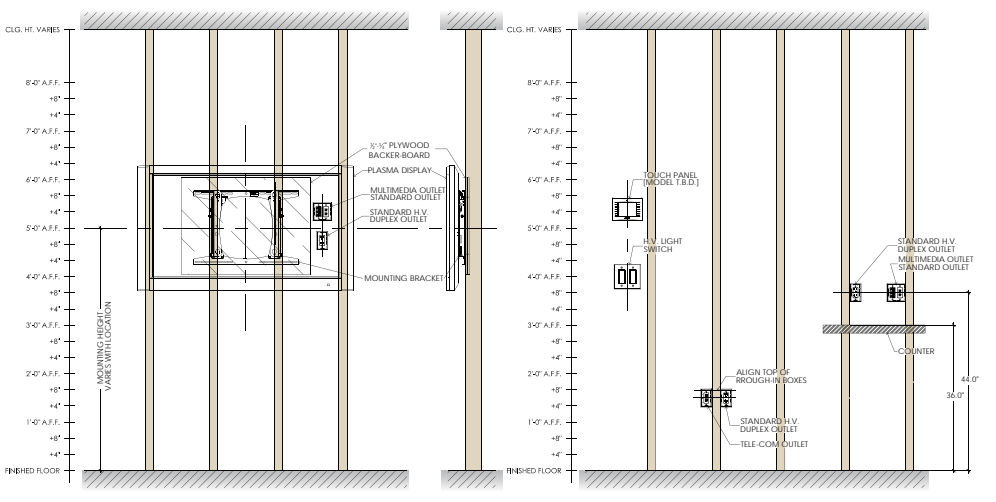
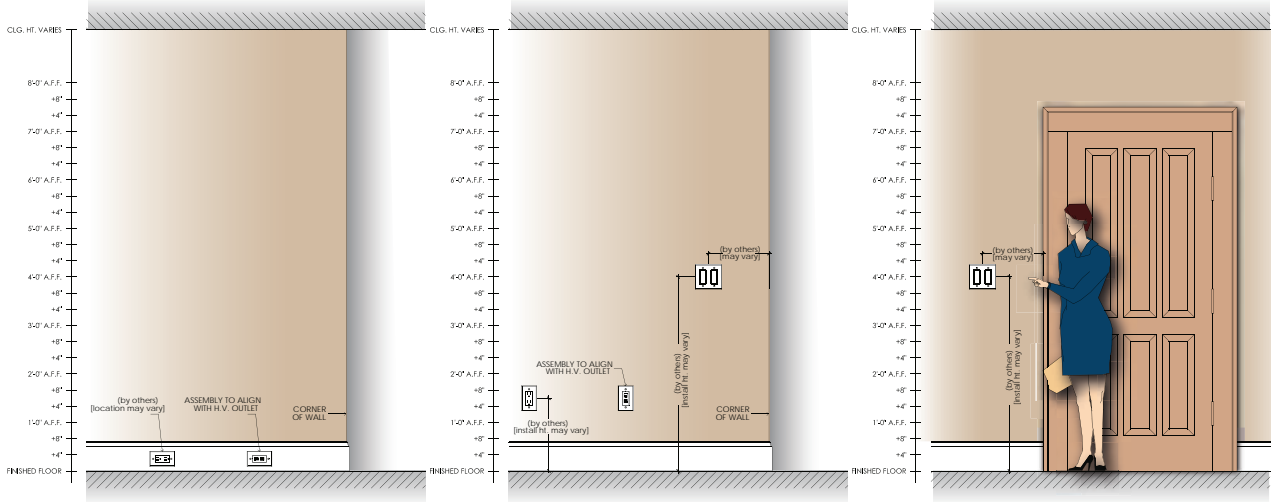
Pair #	First Wire	Second Wire	25 PAIR				
1	White	Blue					
2		Orange					
3		Green					
4		Brown					
5	Red	Slate					
6		Blue					
7		Orange					
8		Green					
9	Black	Brown					
10		Slate					
11		Blue					
12		Orange					
13	Yellow	Green					
14		Brown					
15		Slate					
16		Blue					
17	Violet	Orange					
18		Green					
19		Brown					
20		Slate					
21		Blue					
22		Orange					
23		Green					
24		Brown					
25		Slate					

PIN	Pin Function
1	Data carrier detect
2	Data set ready
3	Receive data
4	Request to send
5	Transmit data
6	Clear to send
7	Data terminal ready
8	Ring indicator
9	Signal ground

Shield connected to drain wire.

PO	RJ25	RJ14	RJ11	PAIR	T/R	+
1	1			3	T	+
2	2	1		2	T	+
3	3	2	1	1	R	-
4	4	3	2	1	T	+
5	5	4		2	R	-
6	6			3	R	-

PIN	Pin Function
1	Chassis ground (cable shield)
2	Positive polarity terminal ("hot")
3	Return terminal(2) ("cold")



INSTALLATION NOTES:

- GENERAL CONTRACTOR TO PROVIDE ALL NECESSARY SUPPORT AND BACKING AT POTENTIAL FLAT PANEL DISPLAY LOCATIONS - COORDINATION: 32"(w) x 24"(h) x DOUBLE 1/2"(d) - GLUED AND BOLTED TO STUDS TO PREVENT SEPARATION - BOLTED INTO STUDS PROVIDING A FLUSH BETWEEN BACKING AND GYPSUM BOARD - FASTENED TO THE STUDS USING 1/4" AND/OR SCREWS

- PLACEMENT - TYPICAL HEIGHT IS 60" A.F.F. (AS SHOWN) TO CENTERLINE (CL) OF BACKING BOX - REFER TO ROOM ELEVATION PAGES AND CROSS SECTIONS (WHEN AVAILABLE) FOR DETAILS FOR FINAL PLACEMENT COORDINATION IN-FIELD.
- LARGE FLAT PANEL SPECIFICATIONS - AS SHOWN ARE SUITABLE FOR DISPLAYS IN THE 32"-65" (DIAGONAL) RANGE.
- SMALL FLAT PANEL (SMALLER THAN 32" DISPLAY) SPECIFICATIONS - WILL REQUIRE SIMILAR BACKING TECHNIQUE USING 1/2" PLYWOOD
- LARGER FLAT PANEL (LARGER THAN 65" DISPLAY) SPECIFICATIONS - WILL REQUIRE CUSTOM BACKING TO BE DETERMINED BASED ON FINAL DISPLAY SPECIFICATION

GENERAL INSTALLATION NOTES:

- ALIGN FACEPLATES BY CENTERLINE (CL) WHEN SPECIFIED AT DIFFERENT HEIGHTS BUT SHARING THE SAME STUD BAY.
- ALIGN JUNCTION BOXES (J-BOXES) TO TOP OF BOX WHEN SPECIFIED AT THE SAME HEIGHT (WHENEVER POSSIBLE)
- ALIGN IN-CEILING SPEAKERS WITH LIGHT CANS ON CENTERLINE (CL) WHERE APPLICABLE TYPICAL
- ALL VIDEO & TELECOM JACKS TO BE SIMILAR TO ELECTRICAL OUTLETS IN HEIGHT & ALIGNMENT - COORDINATE ALL LOCATIONS WITH CONTRACTOR & VERIFY IN-FIELD

- IF ELECTRICAL OUTLETS & LOW VOLTAGE OUTLET LOCATIONS CANNOT BE SIMILAR - COORDINATE WITH BUILDER & INTEGRATOR TO DEFINE SPECIFICATIONS
- DOOR PHONE TO BE MOUNTED AT 48" (A.F.F.), TYPICAL
- PROVIDE 12' (FOOT) WIRE BUNDLE (TAIL - OUT OF WALL) AT ALL UNTRIMMED MULTIMEDIA JACKS & LOCAL SOURCE LOCATIONS.
- PROVIDE 20' (FOOT) WIRE BUNDLE (TAIL - OUT OF WALL) AT ALL HEAD-END (HE) LOCATIONS.
- WALL TELEPHONES TO BE MOUNTED AT 54"-60" (A.F.F), TYPICAL
- WATER CLOSET (W.C.) TELEPHONES TO BE MOUNTED AT 42" (A.F.F.), TYPICAL

ARCHITECTURAL CONSIDERATIONS:

- VERIFY ALL FINAL DEVICE AND/OR EQUIPMENT LOCATIONS WITH ARCHITECT & BUILDER PRIOR TO INSTALLATION
- DO NOT SCALE FROM THESE DRAWINGS - REFER TO SCALED DETAILS PAGE (WHEN AVAILABLE) FOR SYSTEM SPECIFICATIONS **

ELECTRICAL (TECHNICAL POWER) CONSIDERATIONS:

- ALL ELECTRONIC EQUIPMENT REQUIRING ELECTRICAL/TECHNICAL POWER SHALL INCLUDE THE FOLLOWING SPECIFICATIONS:
- 20 AMP RATED DEDICATED CIRCUITS
 - HOSPITAL GRADE OUTLET (WHERE APPLICABLE)
 - DEDICATED CIRCUIT/SAME PHASE

NOTE - ALL CIRCUIT SPECIFICATIONS ARE FOR COORDINATION PURPOSES ONLY.

EXCLUSIONS:

- CONDUIT MAY BE PROVIDED BY OTHERS - REFER TO WIRING PLAN & OR SYSTEM SPECIFICATIONS FOR DETAILS
- ANY STRUCTURAL MODIFICATIONS MUST BE PERFORMED BY OTHERS - INCLUDING BUT NOT LIMITED TO STRUCTURAL ENHANCEMENT OR CUSTOM FRAMING - COORDINATE WITH CONTRACTOR IN-FIELD



General Installation Notes

This sheet displays the standard mounting heights for touch panels, keypads, displays and rough-in boxes.





Partner Products

We utilize best-in-class products that balance performance requirements with project budget.

Control and Collaboration Solutions...

Powered by Crestron.



Crestron is the premier technology partner for business, providing the most dependable, streamlined, and innovative solutions to help your employees stay focused on their work.

Fully Integrated

One touch is all you need to set up a winning presentation. Crestron provides a simple solution for automating everything from AV equipment to lights and shades all into an effortless integrated system.

- flexible solutions for your specific business technology needs.



Crestron Overview



Sound On A Whole New Scale.

It's amazing what happens when people hear what you say. We make that possible.



Chances are, no matter where you are in the world or what you do, you've heard our products. With hundreds of thousands of professional audio systems installed in more than 100 countries throughout the world, we do far more than make sound intelligible.

Our systems make human voices and other sounds resonate clearly and naturally by removing echo, unwanted noise and unpleasant frequencies in locations ranging from airports to hospitals to courtrooms and conference centers.



AUDIA®
Biamp's revolutionary Audia Digital Audio Platform seamlessly integrates powerful hardware and intelligent software for unheard of design and networking potential.



TESIRA®
The first truly scalable media system for digital audio networking using Audio Video Bridging (AVB) — Tesira delivers smarter system modularity, breakthrough performance and boundless expansion potential.

ANALOG - Amplifiers
Count on Biamp for amplifiers built with superior quality and thoughtful engineering. Our MCA Series of Multi-Channel Amplifiers lets you bridge channels in pairs for combined power.



NEXIA®
The entire Nexia lineup is designed with a network-friendly open architecture to help you create economical, intuitive solutions. You'll save time, effort and, ultimately, money.



VOCIA®
Vocia uses standard IP technologies such as CobraNet® to lower the cost and effort of implementing single-site systems, as well as existing IP networks for multi-site installations. Best of all, Vocia comes standard with Biamp's legendary sound quality and reliability. You can depend on Vocia for sound that moves people..

ANALOG - Mixers
Our automatic mixers provide smooth, accurate gating of mic-line signals, even in the harshest acoustic environments. The autoTWO 8-Channel Automatic Mixer is affordable, versatile, feature-rich and easy to use.



Government
The need to be clearly heard and understood is crucial in courtrooms, courthouses, and government offices. Biamp has the systems to support you in customizing audio projects of all sizes.



Healthcare
Health care facilities are as individual as the patients they treat. Biamp equipment is designed to give you the utmost efficiency and adaptability.



Recreation
Our recreation applications cover the spectrum of entertainment - from sports bars to vast sports arenas; from historic museums to performance halls where history is being made.



Business
From broadcasting company meetings across a 500-acre facility to pioneering new sound possibilities in convention and conference centers, Biamp products facilitate new configurations to connect people better.



Education
Biamp equipment can't take credit for raising students' IQs or GPAs. But we are improving their listening experiences, from the Ivy League to West Coast universities; from libraries and law schools to research centers and high schools.



Houses of Worship
potential issues include historic preservation, echo canceling, simultaneous uses for facilities and a need for controls that anybody can operate.



Transportation
Our equipment gives you the flexibility and power to design systems that clearly convey central and local paging, messaging, background music and more.



BIAMP Overview



Natural Collaboration Is The Future

Video and Voice Conferencing Solutions from Poly.



At Poly, we believe improved collaboration leads to increased productivity and efficiency—regardless of your company’s size or mission. Small businesses may need to explore collaboration options in a way very different from mid-sized or enterprise businesses. Service providers have unique needs when developing collaboration services to offer to customers. Polycom has developed voice, video, and data collaboration solutions to address the specific needs of these business categories.



HD Telepresence & Video Conferencing
Visual collaboration solutions for anywhere people work - in the office, at home, or on the go.

- RealPresence Immersive
- RealPresence Room
- Real Presence Packaged Solutions
- RealPresence Desktop
- RealPresence Mobile



RealPresence Platform
Polycom’s award winning RealPresence Platform is a rich suite of tools and applications that combine to offer the most robust, interoperable and scalable platform in the industry for video collaboration. Available as a virtualized software download or shipped on powerful, industry-standard hardware.

- Video SmartStart Offerings
- Collaboration Servers
- Management Applications
- Firewall Traversal & Security
- Video Content Management



Voice
Award winning portfolio of audio communication solutions to improve productivity from the desktop to the conference room and beyond.

- Conferencing Solutions
- Desktop Solutions
- UC Software
- Applications
- Accessories



Products for Microsoft
With complete, end-to-end UC solutions everyone in your organization can collaborate from anywhere, providing experiences that are more engaging, accessible with lower costs & improved productivity.

- Teams Phones and Conference Phones
- Teams Video Solutions
- Video Content Management
- Poly Microsoft Integration Services



Poly Overview



For the Ultimate Communication Experience

The clear choice for your video conferencing needs.



These days, business happens everywhere—whether you’re at home or on the road, in the boardroom, in the conference room or in the corner office. With simple and powerful video conferencing and collaboration solutions from Logitech, it’s never been easier to take your business with you, wherever you happen to be and on whatever device you prefer. Click on a topic here to see how Logitech can keep you completely connected with your team, your prospects and your customers for a competitive edge in today’s dynamic business environment.



Board Room
From the delivery of multiway calls to products that stream and record meetings for future reference, Logitech offers a variety of HD enterprise grade video conferencing solutions to fit the needs of any boardroom.



Executive Office
With Logitech video conferencing solutions, you can empower executive conferencing that will optimize productivity by conducting high quality HD experience meetings that are almost the same, and as effective, as being somewhere in person.



Home Office
With a Logitech mobile or desktop video conferencing solution deployed in your home office, you can attend remote meetings, training sessions and product demonstrations all from the comfort of your desk, dining room or wherever you choose to be.



Large Conference Room
From the delivery of multiway calls to products that stream and record meetings for future reference, Logitech offers a variety of HD video conferencing solutions to fit the needs of any large conference room.



Lecture Hall
If you’ll be in a lecture hall in an educational facility, hospital or government administration building, Logitech has a video conferencing solution for education that will meet the needs of your lecture environment today and that can scale tomorrow when your needs change.



Office
With a Logitech office video conferencing solution in place, you can maximize your productivity by attending meetings from the comfort of your office. And because LifeSize is delivered via high quality HD video, attending your meeting virtually is almost the same, and as effective, as being there in person.



On The Road
We understand that life on the road is the norm for some, and that’s why we’ve developed a line of mobile video conferencing solutions that are small enough to carry with you wherever you go or that can be accessed via the cloud on your laptop, tablet or mobile device.



Small Conference Room
From all-in-one systems that can stay or move from conference room to conference room to solutions that can easily fit in the palm of your hand and travel with you while you’re on the go, Logitech offers a variety of HD video solutions to fit the needs of any small conference room.



Rally Overview
A Division of Logitech



The Most Trusted Audio Brand Worldwide.

Welcome to Shure professional audio products.

SHURE

With a history of audio innovation spanning over 80 years, Shure has turned a passion for making great microphones and audio electronics into an obsession. No wonder Shure continues to set the worldwide industry standard for superior microphones and audio electronics.

MICROPHONES | World renowned microphones for Performance, Recording, Installed and Broadcast applications.



PG

The most accessible Shure microphones for elevating sound quality at gigs, rehearsals and in home recordings.



SM

Industry-standard professional microphones for daily touring, club and studio performances.



BETA

Application-specific microphones engineered for reproduction of fine details in demanding environments.



KSM

Premium microphones with refined and sophisticated components that capture the world's most accomplished studio and live performances.



CLASSIC

Iconic microphones that feature elegant, renowned product design with Shure sound quality.



MICROFLEX

Professional microphones for a wide variety of installed applications.



CENTRAVERSE

Quality, affordable audio for installed applications requiring plug-and-play solutions.



VP

Durable and lightweight microphones in various form factors for broadcast and media production.

WIRELESS SYSTEMS | Various systems and multiple mic options offer unlimited flexibility for any application or budget.



FP

The ideal solution when portability and flexibility are required.



BLX

Professional quality sound with simple setup and intuitive interface, for legendary sound performance right out of the box.



GLX-D

Featuring intelligent technology and smart power options that put reliable digital wireless sound in the hands of performers everywhere.



PGXD

24-bit digital wireless technology that delivers strong, clear RF performance.



SLX

A smart, out-of-the-box wireless solution with innovative setup features.



ULX-S / ULX-P

Sophisticated, scalable, single/dual-channel wireless configurations.



AXIENT

The highest level of spectrum management for mission-critical applications.



MICROFLEX

Provides lifelike sound to signature boardrooms and AV conferencing environments that require high-quality, low-profile condenser microphones.



Shure Overview



The World's Premier Display Provider.

We design displays specifically for your application.



In a world filled with high-tech gizmos and a never-ending array of visual imagery, display performance is a requirement. We know it's not about the technology. It's about what you need to do with it.

At Planar, we focus on how people use our displays. What features really matter to you. The environments you use them in. We listen. We see. We learn. We find ways to help you solve problems you might not even know you have with our pioneering efforts in a variety of industries.



Planar Overview



Planar Solutions

Digital displays are changing the face of our public spaces, while enhancing office productivity and collaboration.



Control Room

Leading corporations, governments, broadcasters, utilities, security and traffic authorities rely on Planar control room display solutions to monitor their networks, identify problems and drive to quick resolution.



Digital Signage

Electronic displays in high-traffic areas are changing the face of our public spaces and the possibilities for digital signage are everywhere. Whether used for informational messaging, advertising, entertainment or architectural ambiance, these digital signage displays can transform the experiences of shopping, working and socializing.



Hospitality

Hotels, restaurants, bars, casinos and healthcare facilities are greeting guests with new video display technology and Planar is on the forefront of digital signage innovation in these hospitality environments.



Broadcast

On-air and off-air, digital display technology is enabling new trends in broadcast. On-camera set design has evolved to new levels, with large video walls, interactive displays and architectural video walls, creating environments.



Corporate

Leading corporations and government agencies are recognizing that their facilities are effectively a spokesperson of their brand, while also creating optimum work environments for employees.



Retail

Building on the physical shopping experience with growth in mobile and internet technologies, retail is a growing segment of the global economy and the perfect place to implement new digital signage displays.



Industrial

Industrial-strength applications require industrial-strength display solutions. Ruggedized for harsh environments. Bright displays optimized for sunlight readability. Enclosures and features that address the most demanding customers in their most demanding applications.



Higher Education

From donor recognition in the development office to student athlete profiles in the athletic center, from menus in the cafeteria to wayfinding in the student union, the applications for digital display technology in higher education have never been more exciting.



Healthcare

From donor recognition in the lobby to surgical schedules posted at nurse's stations. From wayfinding in the cafeteria to self-service patient check-in, the applications for digital display technology in hospitals and medical offices abound.



A World Leader in Visual Solutions

Christie offers projection solutions that add value and extend the functionality to our display and projection systems.



Christie, a global visual technologies company, offers diverse solutions for business, entertainment, and industry. With expertise in film projection since 1929 and professional projection systems since 1979, we've established a reputation as the world's single source manufacturer of a variety of display technologies and solutions for cinema, large audience environments, control rooms, business presentations, training facilities, 3D and virtual reality, simulation, education, media and government. As a market leader, Christie has installed over 100,000 projection solutions worldwide.



Projection Solutions

Christie offers projection solutions that add value and extend the functionality of our display and projection systems.

Christie® has the broadest range of LCD, 1-chip and 3-chip DLP® projectors, with 2K and 4K options, and can offer integrated projection solutions for every application and budget. Preferred by the world's leading businesses, Christie provides projection solutions that add value and extend the functionality of our display systems.



High definition, widescreen resolution 3LCD projector

The Christie LWU505 digital projector offers native WUXGA resolution (1920 x 1200) making it an ideal choice for small to mid-sized applications – corporate AV, higher education, houses of worship –any organization requiring a high definition widescreen projector.



1080 HD DLP® digital projection done right

The Christie HD Series offers the broadest range of the brightest full 1920 x 1080 HD resolution projectors on the market today. Lighter, lower power consumption and 10% brighter than the competition – Christie is HD resolution done right.



A bold new 1-chip DLP® digital projector

Offering an exceptional balance between high brightness and superior color, innovative design and reliability for 24/7 applications, the Christie DS+750 digital projector delivers 7500 ANSI lumens at SXGA+ (1400 x 1050) resolution.



Flexible, Efficient 3-chip DLP Digital Projectors

The most compact digital projector in its class, this dual mercury lamp platform provides the high-performance and feature-rich standards you've come to expect from all Christie® products.

Innovation

World-class projection displays and visual solutions for any application.

Christie offers world-class projection displays and visualization solutions for any type of content – from everyday business, education and training applications... to the latest frontiers of artistic expression... to scientific exploration via 3D/ Advanced Visualization and Simulation... to the latest films from Hollywood.

Image Quality

By developing our own patented technologies Christie produces the highest quality images in the industry.

Texas Instrument's DLP chips are built with millions of tiny mirrors that are spaced less than one micron apart. They produce razor-sharp images with incredible color and brightness.

Reliability

With more than 30 years of experience, we know how to design a projector that lasts.

Christie knows what it takes to create, manufacture and service the world's best projectors. Our engineers are developing and using the most advanced technologies to design new products that will exceed your expectations.

Christie Projectors Overview



Discover The Difference.

Comprehensive projection solutions for over 100 years.



From brainstorm to build. Our custom-tailored service turns your idea into a reality. A Design Center Coordinator provides white glove customer service ensuring the best experience. Our talented team of engineers will transform your vision into a working blueprint, and collaborate with our manufacturing team to make sure it is built to your specifications and delivered on time. Some of the greatest installations in the world have come through the Da-Lite Design Center.



Electric Screens

Designed to eliminate the extra step of finishing the screen with trim, the projection screens is designed with ceiling trim already in place.



ViewShare Technology

The ViewShare™ Tensioned Advantage® Retrofit upgrades older Advantage Electrols® with the latest plug and play, video conferencing technology.



Fixed Frame Screens

The UTB Contour has an ultra thin bezel frame and low profile. Designed to look like a large flat panel, the UTB Contour can more than double the size of the largest flat panel televisions available.



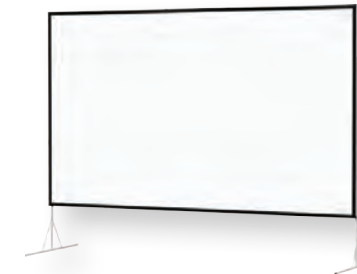
Interactive Products

The IDEA™ Screen is an erasable screen. It can be used with a projector as a screen or as a whiteboard with dry-erase markers.



Rigid Rear Projection

The Da-Plex is the optimal rigid rear projection screen with eight coating options formulated to fit your application requirements.



Fast-Fold Portable Screens

The Fast-Fold® Deluxe Screen System is designed for rental and staging environments, and features easy release latches on the frame for efficient set up and tear down.



Portable Screens

The Picture King® is a durable tripod screen designed for daily use with heavy aluminum legs with a toe release mechanism for a wide stance with maximum stability.



Manual Screens

The Floor Model C is a pull-up screen with reduced spring tension for ease of use. Ideal for rental, stage and hospitality settings, it is also available with a carpeted case.



Projector Lifts

The Da-Lift Pivot 26P and 33P hold up to 25 pounds and feature a fixed pivot point that ensures proper projector alignment during and after installation.



Da-Lite Screens Overview



Tannoy Professional

A Distinguished History

Founded originally as the Tulsemere Manufacturing Company in London, England in 1926, Tannoy presides over one of the longest and most distinguished histories in the world of audio equipment.

What Are The Benefits?

The Dual Concentric delivers even dispersion in the horizontal and vertical planes, providing exceptional off-axis performance.

The famous brand name originates from a solid-state rectifier invented by company founder, Guy R. Fountain, made from a Tantalum-Lead Alloy (hence Tannoy), an early indicator of the invention and technical innovation that would become the hallmark of the company throughout the 20th Century and remaining so to this day.



Boardrooms & Offices

In the early 1990s Tannoy created a revolution in installed sound with the legendary Ceiling Monitor System.



Tannoy and Lab.gruppen provide perfect ambience for Hotel Indigo's Mr. Purple Bar

Located on NYC's Lower East Side and opened in late 2015, the Hotel Indigo offers patrons a combination of sleek modern design and local flavour with an eye – and ear – to providing them with a unique experience. Central to that experience is the hotel's 15th floor, indoor/outdoor, rooftop bar and restaurant, Mr. Purple. Created by hospitality industry leader, Gerber Group and designed by Crème Design to capture an artist-loft ambience, Mr. Purple features an audio system comprised of class-leading TANNOY loudspeakers and LAB GRUPPEN C Series amplifiers.



Tannoy Overview



Service & Support

We take pride in building long term relationships with our valued customers.



Client Service Portal- Technical Support Services

CreationCare Support provides comprehensive preventative audio visual maintenance and managed AV service level agreements. Our CreationCare Service Team can assist you today.

- Flexible Service Level Agreement Pricing
- Adoption and training programs
- Ensured reliability of critical audiovisual assets
- Reduced time spent for system updates and repairs
- Improved system performance, reduce downtime
- Advanced preventive maintenance



Support Overview



1001 Shary Circle, Suite 1, Concord, CA 94518 | 925.446.4332 | info@creationnetworks.net
www.creationnetworks.net
